

COOPERATIVE EDUCATION PROGRAM

Ross Hall 417
569.3584 • FAX 569.3588

ualr.edu/co-op

Office Hours:

Monday - Friday - 8 a.m. - 5 p.m.

- Partnerships with businesses, industries & government agencies
- Experience through work-integrated learning
- Academic credit & supplemental income

ACADEMIC SUCCESS CENTER

Speech Building 101
569.3280 • FAX 569.3420

ualr.edu/academicsuccess

Office Hours:

Monday - Friday - 8 a.m. - 5 p.m.

Collegiate Success Program

For students not meeting mandated Admission Standards, on Academic Probation, or wanting to improve academic skills.

- Academic advising & coaching
- Small class enrollment: College Reading and/or Composition Fundamentals
- Academic & study skills workshops and supplemental instruction
- Community building activities
- Early class registration

Program for Enhanced Learning

For students needing to increase academic skills for success:

- College reading & study skills course
- Reading for academic content course
- ACT, GRE, & Praxis test preparation

TRiO: Student Support Services

For First-Generation, Low-Income & Students with a Disability:

- One-on-one & group academic tutoring
- Academic & financial advising
- Personal & career counseling
- Academic workshops & cultural/educational activities
- Textbook & laptop loan services
- Grants & scholarships

TRiO: Ronald E. McNair Scholars

For underrepresented students interested in doctoral study:

- Research opportunity with Ph.D. Faculty mentor
- Graduate school admission & financial aid assistance
- Internship opportunity
- Professional development seminars
- Academic counseling/tutoring
- GRE preparation
- Research conference travel opportunities
- Internship stipend

TRANSFER STUDENT SERVICES

Education 204
682.1183 • FAX 682.1106

ualr.edu/transfer

Office Hours:

Monday - Friday - 8 a.m. - 5 p.m.

- Pre-Transfer planning & assistance
- Prospective transfer credit evaluation
- Transfer core curriculum review & credit adjustment
- In-state community college transfer guides
- Out-of-state & private transfer credit research/ analysis
- Current & continuing transfer student support

Note: Hours listed are for Fall 2011.

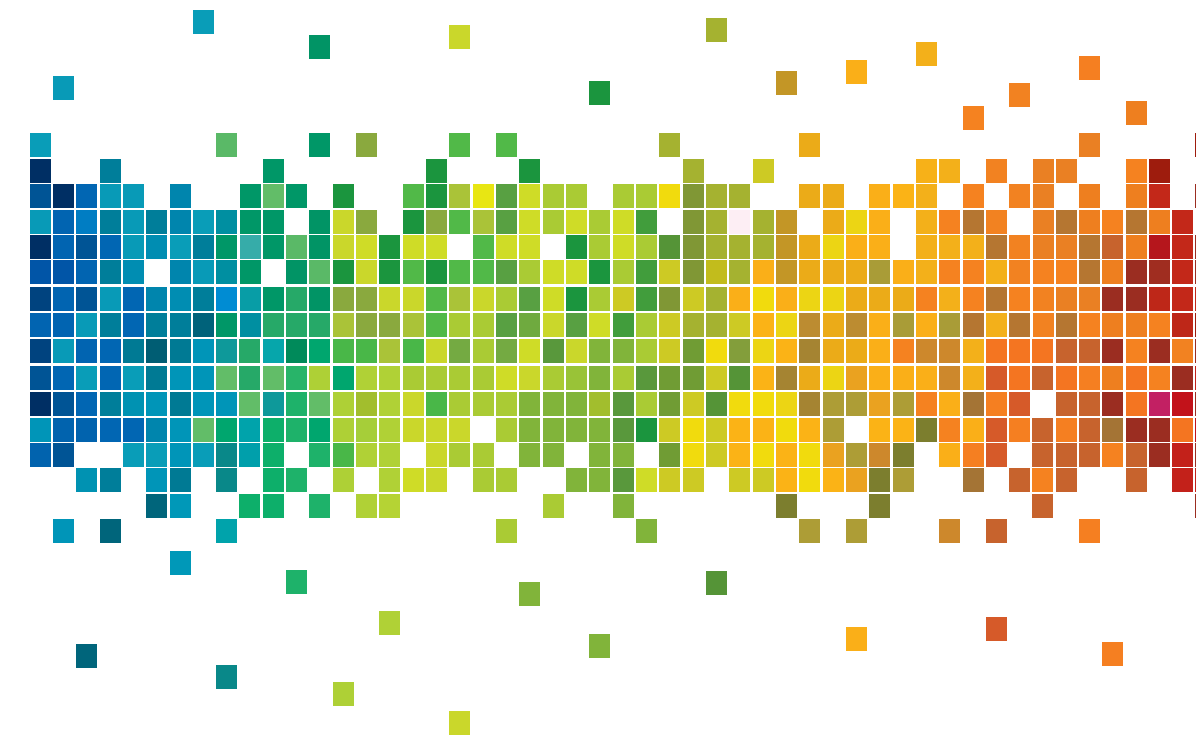


Educational, Student Services and Student Life
University of Arkansas at Little Rock
2801 S. University Ave.
Little Rock, Arkansas 72204

In accordance with the Americans with Disabilities Act, this publication will be made available in alternative formats on request. For assistance please contact the Disability Resource Center at 501.569.3143.

A Quick Guide

Educational, Student Services, and Student Life



UNIVERSITY OF ARKANSAS AT LITTLE ROCK

Enrollment Services

ADMISSIONS & FINANCIAL AID

Administration South 208
569.3127 • FAX 569.8956
ualr.edu/admissions or ualr.edu/financialaid
Office Hours:
Monday - Thursday 7:30 a.m. - 6 p.m.
Friday - 7:30 a.m. - 5 p.m.

- Undergraduate admissions
- Student T- number & PIN
- Scholarship processing
- Residency status verification
- Financial aid planning & assistance
- Award processing and eligibility verification for grants, loans, work study & scholarships
- Satisfactory Academic Progress (SAP) review

RECORDS & REGISTRATION

Administration South 203
569.3110 • FAX 569.8168
ualr.edu/records
Office Hours:
Monday - Thursday 8 a.m. - 6 p.m.
Friday - 8 a.m. - 5 p.m.

- Class Schedule
- Registration
- Enrollment Verification
- Grades
- Transcripts
- Graduation Certification
- Commencement
- Academic Records Maintenance

PRIVATE SCHOLARSHIPS

Administration North 205
683.7819 • FAX 683.7820
ualr.edu/scholarships/private
Office Hours:
Monday - Friday - 8 a.m. - 5 p.m.

- Annual March 1 application deadline
- Scholarships by college
- Private scholarships: alumni, athletics, general, law

VETERANS SERVICES

Administration South 113
682.8387 • FAX 683.7055
ualr.edu/admissions/veterans
Office Hours:
Monday - Friday - 8 a.m. - 5 p.m.

- Veterans' benefits & services
- Certification of educational benefits
- Withdrawals for military deployments
- Student veteran resource center

Student Development

OFFICE OF CAMPUS LIFE

Donaghey Student Center 216
569.3308 • FAX 569.3209
ualr.edu/campuslife
Office Hours:
Monday - Thursday - 8 a.m. - 9 p.m.
Friday - 8 a.m. - 5 p.m.
Saturday - Noon - 6 p.m.
Sunday - 2 p.m. - 6 p.m.

New Student Orientation programs

- Advocacy programs
 - > Women
 - > Diversity Programs
 - > Adult learners
 - > Commuter student services
 - > First generation
- Greek life advisement
- Campus Recreation
- Student organization registration & advisement
- Special events & campus celebrations
- Allocation & administration of student activity fee
- Tutorial services referrals
- Ombudsman services

CAMPUS RECREATION

Donaghey Student Center 109D
569.3232 • FAX 569.3209
ualr.edu/recreation

HOUSING OFFICE

University Commons - 3101 S. Taylor St.
661.1743 • FAX 661.1757
ualr.edu/housing
Office Hours:
Monday - Friday 8 a.m. - 5 p.m.
University Commons Hours:
Monday - Friday 8 a.m. - 5 p.m.
Saturday & Sunday - 3 p.m. - 11 p.m.

Housing continued

- On-campus housing (Residence Halls & Apartments)
- UALR rental houses
- Off-campus housing referrals
- Residential meal plans

HEALTH SERVICES

Donaghey Student Center 102
569.3188 • FAX 683-7654
ualr.edu/health
Office Hours:
Monday - Thursday 7 a.m. - 7 p.m.
Friday - 8 a.m. - 5 p.m.

- Evaluation & treatment of illnesses (*prescriptions available*)
- Women's health services: annual exams & birth control
- STD screening, evaluation, and treatment
- Health screenings: cholesterol, blood pressure, and TB
- Immunizations
- Smoking cessation: individualized & group education / support

COUNSELING & CAREER PLANNING SERVICES

Ross Hall 416
569.3185 • FAX 569.8156
ualr.edu/personalcounseling
ualr.edu/careerservices
Office Hours:
Monday - Thursday 7 a.m. - 7 p.m.
Friday - 8 a.m. - 5 p.m.

- Career fairs
- Career assessments
- Personal counseling
- Career counseling
- Academic major exploration
- Résumé assistance
- Job interview preparation

DISABILITY RESOURCE CENTER

Donaghey Student Center 103
TDD 569.3143 • FAX 569.8068
ualr.edu/disability
Office Hours:
Monday - Friday - 8 a.m. - 5 p.m.

- Usability programs, partnerships & training
- Inclusive learning environments
- Classroom accommodations
- Assistive technology

JUDICIAL AFFAIRS

Donaghey Student Center 215
569.3328 • FAX 683.7033
ualr.edu/deanofstudents
Office Hours:
Monday - Thursday 7 a.m. - 7 p.m.
Friday - 7 a.m. - 5 p.m.

- Dean of Students
- Chief Student Judicial Officer
- Code of student rights, responsibilities & behavior
- Enforcement of university policies, rules & regulations
- Student discipline
- Ombudsman services
- Parent programming

AAMI / TEAMS

African American Male Initiative Teaching Enhancements Affecting Minority Students
Administration South 107
569.8713 • Fax 569.3277
ualr.edu/aami • ualr.edu/teams
Office Hours:
Monday - Friday - 8 a.m. - 5 p.m.

- Academic preparation, academic performance, and socio-emotional transition
- Assistance in identifying resources to help meet expectations & attain educational goals
- Mentoring & peer advising
- Organization membership

BOOKSTORE

Donaghey Student Center 115
569.3245 • FAX 569.8987
ualr.bkstore.com
Operating Hours:
Monday - Thursday 7:45 a.m. - 6 p.m.
Friday - 7:45 a.m. - 5 p.m.

- Text & general books
- School & office supplies
- UALR clothing & spirit gifts
- Custom course-pack publishing
- Special orders for books, text, trade, or clothing
- Online book orders

DONAGHEY STUDENT CENTER

Administration DSC 101
569.3362 • FAX 569.8295
ualr.edu/studentcenter
Operating Hours:
Monday - Thursday -6 a.m. - 11 p.m.
Friday - 6 a.m. - 7 p.m.
Saturday - 11 a.m. - 7 p.m.
Sunday - 11 a.m. - 11 p.m.
Information Desk Hours:
Monday - Thursday -7 a.m. - 7 p.m.
Friday - 7 a.m. - 5 p.m.

- Student I.D. cards
- Campus information & maps
- Conference & building services
- Non-student membership & information
- Fit/Well programs & personal training
- Recreational programs
 - > Aquatics
 - > Fitness classes
 - > Informal / Outdoor recreation
 - > Intramural & club sports
 - > Equipment check-out & rentals

DINING SERVICES

Sodexo / UALR Foodservice Partnership
569.8763 • FAX 569.8728
ualrdining.com
Operating Hours:
Monday - Friday - 7 a.m. - 7 p.m.
Saturday and Sunday - 11 a.m. - 1 p.m.
5 p.m. - 7 p.m.

- DSC Diamond Café
- DSC Quickserve Food Court
- EIT Sub Connection
- Reynolds Business Center C-Store
- University Commons C-Store
- Commuter meal plans

TESTING SERVICES AND STUDENT LIFE RESEARCH

Ross Hall 409
569.3198 • FAX 569.8156
ualr.edu/testing
Office Hours:
Monday - Friday - 8 a.m. - 7 p.m.

- COMPASS testing
- Foreign language placement testing
- Credit-by-examination: CLEP, Advanced Placement, Departmental Examinations, International Baccalaureate, etc.
- Admission testing: ACT, COMPASS, EVOLVE
- Correspondence testing
- Graduate School & Professional Examinations; MAT, LSAT, MPRE, Praxis

OFFICE OF RECRUITMENT

University Plaza - Welcome Center
683.7302 • FAX 683.7304
ualr.edu/recruitment
Office Hours:
Monday - Thursday 8 a.m. - 7 p.m.
Friday - 8 a.m. - 5 p.m.
Campus tours on alternating Saturdays 11:30 a.m. - 2 p.m.

- High school & two-year college visits
- Campus tours
- Open house / special events
- Freshman & transfer student services
- Telecounseling for prospects
- Student Ambassadors
- Social Media Liaison

UNDERGRADUATE ACADEMIC ADVISING

Ross Hall 406
569.3386 • 569.8688
683.7008 • FAX 569.8732
ualr.edu/advising
Office Hours:
Monday - Thursday - 7:30 a.m. - 6 p.m.
Friday - 7:30 a.m. - 5 p.m.

- Academic advising for all new students and for students with undeclared majors
- ACT & SAT score interpretation
- Eligibility review for COMPASS tests
- Core curriculum review
- Eight semester academic planning for intended degree(s)
- Annual "Explore the Majors" event
- Associate of Arts in General Studies
 - > Core curriculum review
 - > Continuing counseling for baccalaureate degree
- Personal Awareness Courses (PEAW) to support student academic, social and leadership development
 - > The First-Year Experience
 - > Chancellor's Leadership Corp
 - > Career Planning and Life Options
 - > Leadership Development Courses