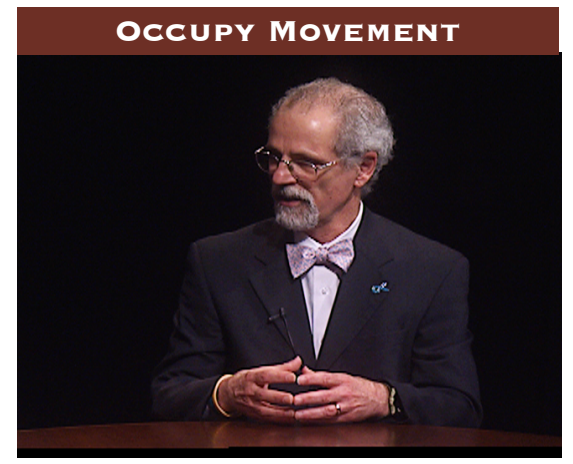
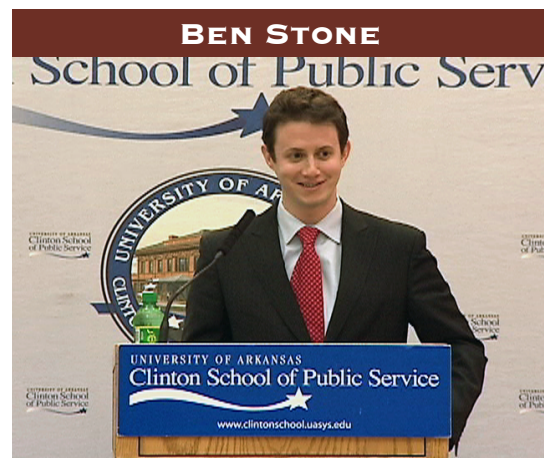


THIS WEEK ON UALR UNIVERSITY TELEVISION

FEBRUARY 13 - FEBRUARY 19TH 2012



Time	Monday 13	Tuesday 14	Wednesday 15	Thursday 16	Friday 17	Saturday 19	Sunday 19
7:00 AM	DWTV Journal	DWTV Journal	DWTV Journal	DWTV Journal	DWTV Journal	DWTV Journal	DWTV Journal
7:30 AM	Classic Arts	Classic Arts	Classic Arts	Classic Arts	Classic Arts	Classic Arts	Classic Arts
8:00 AM	DWTV Journal/ Business	DWTV Journal/ Business	DWTV Journal/ Business	DWTV Journal/ Business	DWTV Journal/ Business		DWTV Journal/ Business
8:15 AM	In Focus	In Focus	In Focus	In Focus	In Focus		In Focus
9:00 AM	UALR School of Mass Comm. <i>Fall 2011 Student Showcase</i>	Clinton School Debra Jospin Shirley Sagaway "The Charismatic Organization: 8 Ways to Grow a Nonprofit"	Clinton School Benjamin Stone Pres. of Indego Africa <i>The Rise of Social Enterprise: Challenges and Opportunities</i>	Steve Shields Show UALR Basketball	Clinton School Julie Gehrki Dir. of Walmart Foundation <i>Fighting Hunger in America</i>		
9:30 AM				Clinton School Rosalie Gould Japanese Internment Camps			
10:00 AM	Classic Arts	Classic Arts	Classic Arts	Classic Arts	Classic Arts	Classic Arts	Classic Arts
10:30 AM							
11:00 AM						DWTV Journal/ Business	Bowen Connection Occupy Movement
11:30 AM	Bowen Connection PAC's	Clinton School Julia Sweig Dir. for Latin America Studies Council on Foreign Relations "CUBA: What Everyone Needs to Know"	Steve Shields Show UALR Basketball	Center Stage at UALR ARTSPREE Johannes Moller guitar winner of the GFA Concert Artist Competition	Clinton School Julie Gehrki Dir. of Walmart Foundation <i>Fighting Hunger in America</i>	Europe in Concert	Center Stage at UALR Guest Artist Bradley Moore "Selections by Mozart, Hindemith, Schumann"
NOON	Clinton School Thurston Clark "The Last Campaign: Robert F. Kennedy"		"Today's Garden" with Janet Carson			"Today's Garden" with Janet Carson	
12:30 PM	Euromaxx	Euromaxx	Euromaxx	Euromaxx	Euromaxx	Euromaxx	Euromaxx
1:00 PM	DWTV Journal	DWTV Journal	DWTV Journal	DWTV Journal	DWTV Journal	DWTV Journal	DWTV Journal
1:30-3:00 PM	Classic Arts	Classic Arts	Classic Arts	Classic Arts	Classic Arts	Classic Arts	Classic Arts
3:00 PM	Evenings with History UALR Professor Charles Bolton <i>The Underground Railroad: On Track, Derailed, and Back on Track Again</i>	UALR School of Mass Comm. <i>Fall 2011 Student Showcase</i>	Home Fry-ed Movies • Cary Grant & Audrey Hepburn • "Charade"	On Campus @ UALR- Racial Attitudes in Pulaski County 2010 Annual study by the UALR Institute of Government	Clinton School Hans Klemm U.S. Embassy in Kabul <i>Securing Rule of Law in Afghanistan</i>	Center Stage at UALR ARTSPREE Johannes Moller guitar winner of the GFA Concert Artist Competition	Clinton School Benjamin Stone Pres. of Indego Africa <i>The Rise of Social Enterprise: Challenges and Opportunities</i>
3:30 PM							
4:00 PM	UALR TV Presents: Inside Art <i>El Grito Exhibit</i>	Clinton School Jennifer Buffet NoVo Foundation a philanthropic organization focused on the empowerment of women and girls		Bowen Connection Occupy Movement		Clinton School The Arkansas Rep "To Kill a Mockingbird"	
4:30 PM	Classic Arts		Classic Arts	Classic Arts	Classic Arts		Classic Arts
5:00 PM	Classic Arts	Classic Arts	Classic Arts	Classic Arts	Classic Arts	Classic Arts	Classic Arts
5:30 PM							
6:00 PM	Clinton School Carlotta Walls LaNier member of the Little Rock Nine discusses her book "A Mighty Long Way"	Clinton School Benjamin Stone Pres. of Indego Africa <i>The Rise of Social Enterprise: Challenges and Opportunities</i>	Clinton School Mickey Edwards "Reclaiming Conservatism"	Steve Shields Show UALR Basketball	Center Stage at UALR Norman Boehm/ Annaliese Crosmer <i>A Faust Symphony</i>	UALR School of Mass Comm. <i>Fall 2011 Student Showcase</i>	Clinton School Julie Gehrki Dir. of Walmart Foundation <i>Fighting Hunger in America</i>
6:30 PM			Bowen Connection PAC's	Bowen Connection PAC's			
7:00 PM	DWTV Journal	DWTV Journal	DWTV Journal	DWTV Journal	DWTV Journal	DWTV Journal	DWTV Journal
7:30 PM	Clinton School Benjamin Stone Pres. of Indego Africa <i>The Rise of Social Enterprise: Challenges and Opportunities</i>	Steve Shields Show UALR Basketball	"Today's Garden" with Janet Carson	Clinton School Julie Gehrki Dir. of Walmart Foundation <i>Fighting Hunger in America</i>	UALR TV Presents: "Inside Art" printmaker Delita Martin	Clinton School Allan Kellehear "A Social History of Dying" How ancient ideas have shaped how we view death.	Center Stage at UALR ARTSPREE Johannes Moller guitar winner of the GFA Concert Artist Competition
8:00 PM							
8:30 PM	UALR School of Mass Comm. <i>Fall 2011 Student Showcase</i>	Home Fry-ed Movies with Ben Fry "Detour"	Center Stage at UALR ARTSPREE Johannes Moller guitar winner of the GFA Concert Artist Competition	Bowen Connection Occupy Movement	Clinton School Benjamin Stone Pres. of Indego Africa <i>The Rise of Social Enterprise: Challenges and Opportunities</i>	Center Stage at UALR ARTSPREE Johannes Moller guitar winner of the GFA Concert Artist Competition	Clinton School Benjamin Stone Pres. of Indego Africa <i>The Rise of Social Enterprise: Challenges and Opportunities</i>
9:00 PM				"Today's Garden" with Janet Carson			
9:30 PM	Clinton School Sheena Iyengar Columbia University <i>"The Art of Choosing"</i>	Clinton School Louie Psihoyos Academy Award Winning Director <i>The Ultimate</i>	Center Stage at UALR Norman Boehm/ Annaliese Crosmer <i>A Faust Symphony</i>	Clinton School Benjamin Stone Pres. of Indego Africa <i>The Rise of Social Enterprise: Challenges and Opportunities</i>	On Campus @UALR- Elliot Chodoff <i>Strategic Implications of Arab Spring</i>	Center Stage at UALR Arkansas Flyer 2010 Radio Variety Show produced by KUAR	On Campus @UALR- Stacey Lannert Power of Women Lecture <i>"Redemption: A Memorial"</i>
10:00 PM							
10:15 PM	Clinton School Louie Psihoyos Academy Award Winning Director <i>The Ultimate</i>	Steve Shields Show UALR Basketball	Center Stage at UALR Norman Boehm/ Annaliese Crosmer <i>A Faust Symphony</i>	Clinton School Benjamin Stone Pres. of Indego Africa <i>The Rise of Social Enterprise: Challenges and Opportunities</i>	On Campus @UALR- Elliot Chodoff <i>Strategic Implications of Arab Spring</i>	Center Stage at UALR Arkansas Flyer 2010 Radio Variety Show produced by KUAR	Europe in Concert
10:30 PM							
11:00 PM	DWTV Journal/ Business	DWTV Journal/ Business	DWTV Journal/ Business	DWTV Journal/ Business	DWTV Journal/ Business	DWTV Journal/ Business	DWTV Journal/ Business
11:15 PM	World Stories	Talking Germany	Agenda	Insight Germany	Quadriga	Treasures of World	Journal Interview
						In Focus	In Focus