

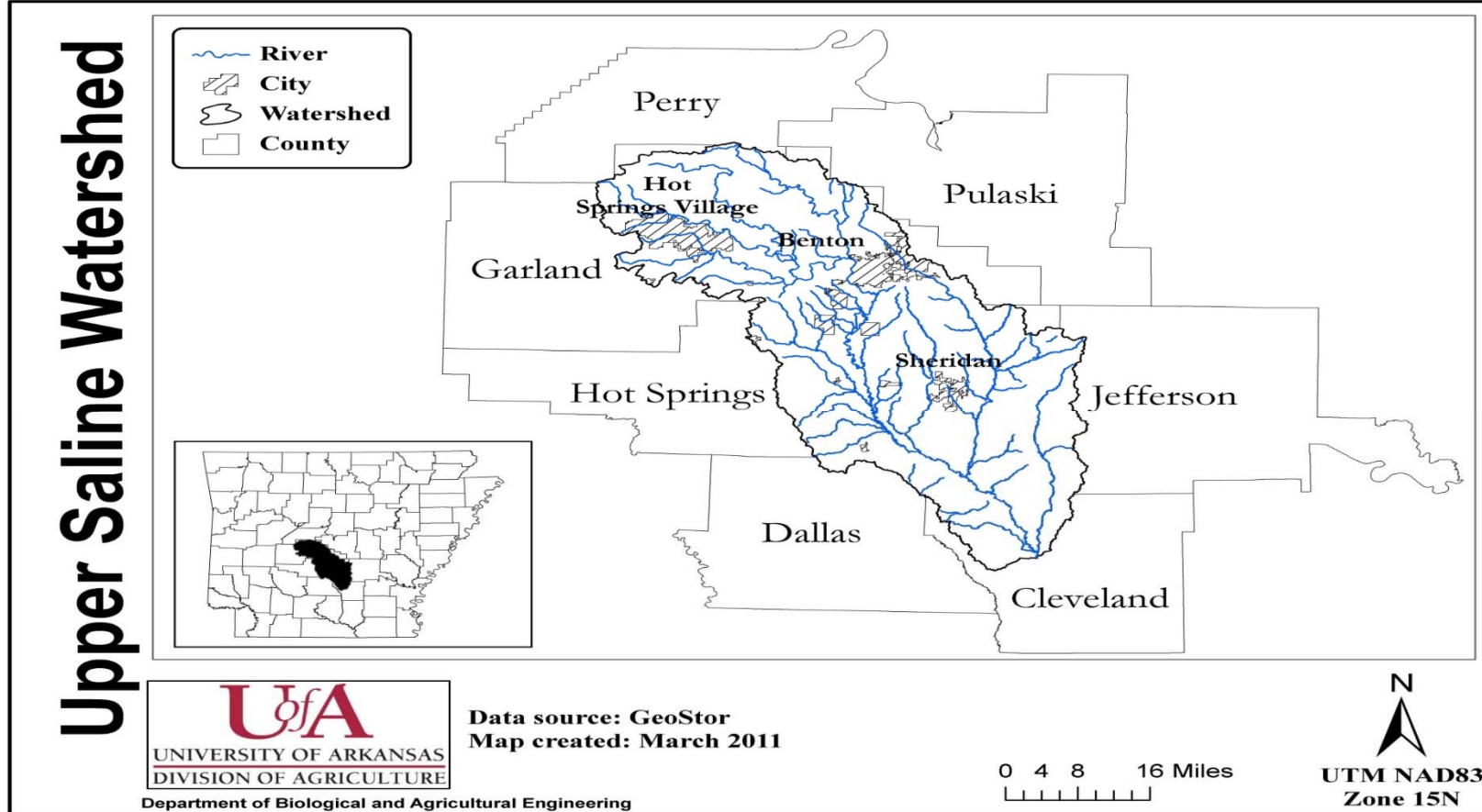
Additional Information on the Saline River and Its Forks

The Saline River rises north of Benton in the Ouachita Mountains and is formed by four forks that converge near Riverside in Saline County.

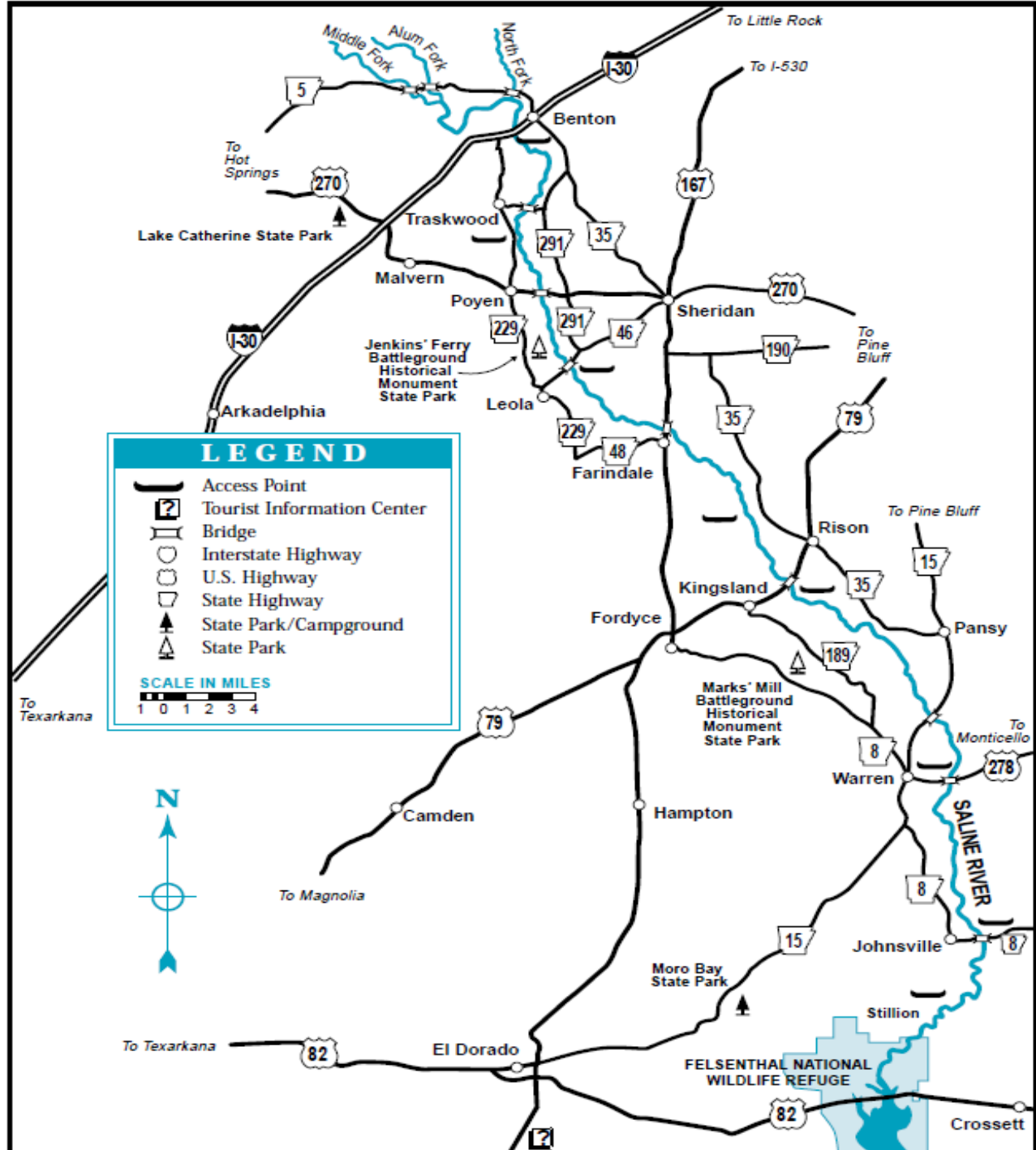
- The South Fork is thirty-eight miles long and is the only one not wholly formed in Saline County.
- The Middle Fork is thirty-seven miles long, and its banks are a paradise of wildflowers.
- Alum Fork is sixty-one miles long and is a dramatic stream, flowing at the base of towering cliffs.
- North Fork is the shortest at twenty-nine miles.

The Saline River meanders through Saline, Grant, Dallas, Cleveland, Bradley, Drew, and Ashley counties before it empties into the Ouachita River.

Among the communities located near the river are Haskell (Saline County), Traskwood (Saline County), Prattsville (Grant County), Farindale (Dallas County), Staves (Cleveland County), Rison (Cleveland County), Warren (Bradley County), and Longview (Ashley County).



SALINE RIVER AND VICINITY



LEGEND

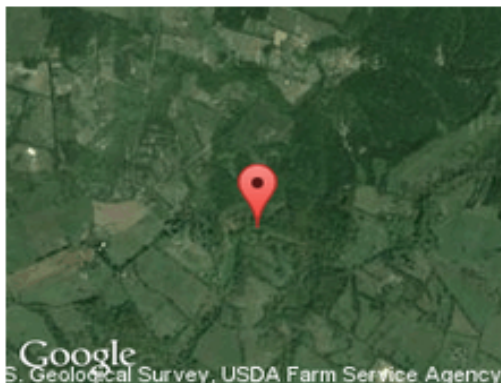
- Access Point
- Tourist Information Center
- Bridge
- Interstate Highway
- U.S. Highway
- State Highway
- State Park/Campground
- State Park

SCALE IN MILES
1 0 1 2 3 4



Home » Fishing » United States » Arkansas » Benton » North Fork Saline River

North Fork Saline River Fishing near Benton, Arkansas



★★★★★ 1 Fishing Reports

5 star rating out of 5 by 1 reviewer

Fish for:

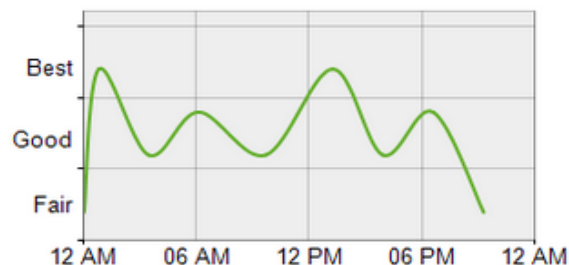
Smallmouth Bass

Access: Public

Fishing License: Required

Fishing Rules & Regulations: Arkansas Fish & Wildlife

Fishing Times for North Fork Saline River



Best Fishing Times

11:47PM to 1:47AM, and 12:15PM to 2:15PM

Alternate Fishing Times

5:06AM to 7:06AM, and 5:36PM to 7:36PM

Fishing North Fork Saline River, AR on 6/10/2015 will be best from 11:47PM through 1:47AM, and from 12:15PM to 2:15PM. If those times won't work for you, 5:06AM to 7:06AM looks promising, as does 5:36PM to 7:36PM. Remember to adjust these times based on barometric pressure, and weather changes.