

RENOVATION OF DORM AND CHAPEL  
ARKANSAS SCHOOL FOR MATHEMATICS, SCIENCES, AND THE ARTS  
200 WHITTINGTON AVE., HOT SPRINGS, AR

Allison + Partners, Inc.  
200 W. Capitol, Suite 1400  
Little Rock, AR 72201  
P: 501.376.0717

# RENOVATION OF DORM AND CHAPEL

ARKANSAS SCHOOL FOR MATHEMATICS, SCIENCES, AND THE ARTS  
200 WHITTINGTON AVE., HOT SPRINGS, AR

Architect of Record:

**Allison + Partners**

200 W. Capitol, Suite 1400 Little Rock, AR 72201 (501) 376-0717

Structural / Mechanical / Electrical / Plumbing Engineer:

**Bernhard TME**

1 Allied Drive, Suite 2600  
Little Rock, AR 72202

(501) 666-6776  
tme@tmeCorp.com

## SCHEMATIC DESIGN REVIEW SET OCTOBER 7, 2020

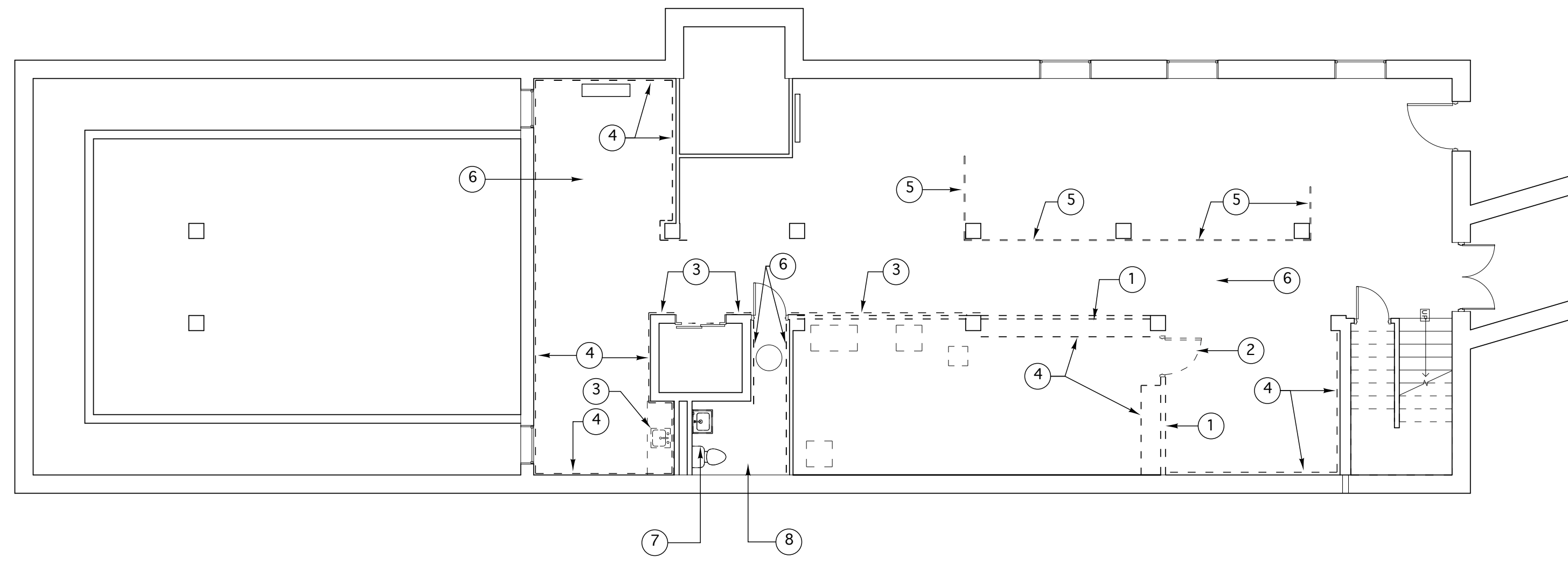
### TABLE OF CONTENTS:

A1.1	BASEMENT AND FIRST FLOOR DEMO
A1.2	SECOND AND FIRST FLOOR DEMO
A1.3	BASEMENT FLOOR PLAN AND RCP
A1.4	FIRST FLOOR PLAN AND RCP
A1.5	SECOND FLOOR PLAN AND RCP
A1.6	THIRD FLOOR PLAN AND RCP
A2.1	FIRST AND SECOND FLOOR CHAPEL DEMO
A2.2	FIRST AND SECOND FLOOR CHAPEL PLANS
A2.3	FIRST AND SECOND FLOOR CHAPEL RCP

GENERAL NOTES:

1. DIMENSIONS ARE TO FACE OF GYP. BOARD AND EXISTING COLUMN GRID UNLESS OTHERWISE NOTED.

2. CONTRACTOR TO VERIFY EXISTING COLUMN GRIDS (AS-BUILTS) ARE SHOWN IN THE EXACT LOCATION THAT APPEAR IN THIS DRAWING PRIOR TO PARTITION LAYOUT AND INSTALLATION.



**1 BASEMENT DEMO PLAN**

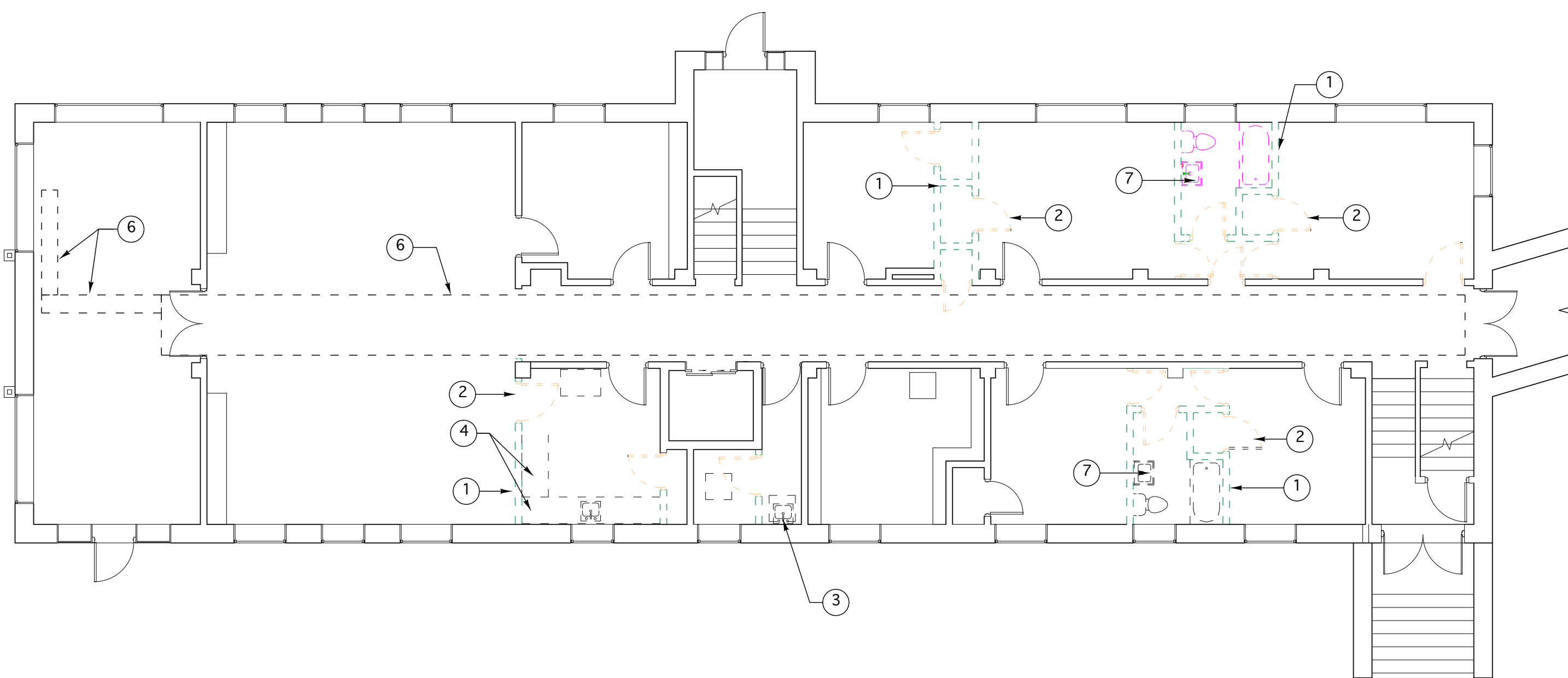
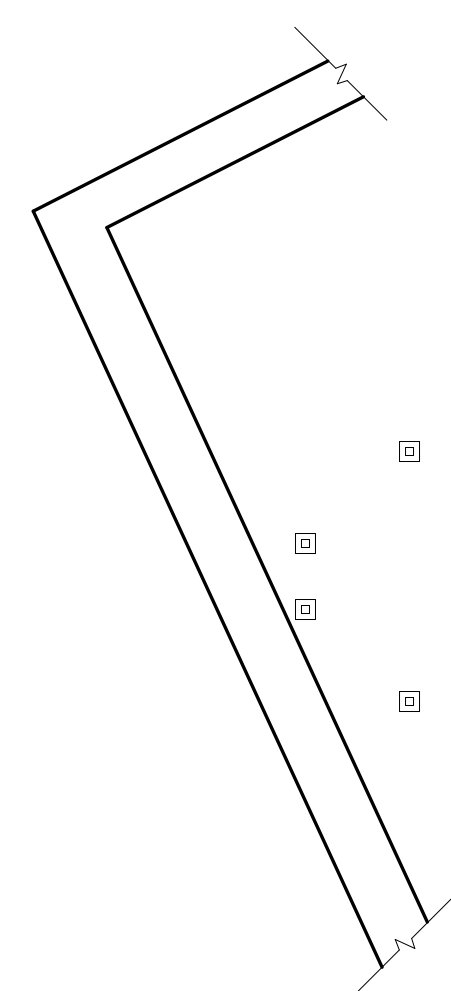
SCALE: 1/8"=1'-0"

**DEMOLITION NOTES:**

- ① REMOVE EXISTING WALL AND ASSOCIATED COMPONENTS.
- ② REMOVE EXISTING DOOR AND FRAME.
- ③ REMOVE EXISTING MILLWORK AND ASSOCIATED COMPONENTS.
- ④ REMOVE EXISTING WALL PANELING AND FURRING.
- ⑤ REMOVE EXISTING SCREEN WALL.
- ⑥ REMOVE EXISTING LAY-IN CEILING TILES AND GRID.
- ⑦ REMOVE EXISTING PLUMBING FIXTURES
- ⑧ REMOVE EXISTING TILE FLOORING AND TILE WALL FINISHES.

**GENERAL NOTES:**

- 1. REMOVE ALL WINDOW TREATMENTS.
- 2. SEE MECHANICAL AND PLUMBING SHEETS FOR REMOVAL OF UNITS AND FIXTURES.
- 3. REMOVE ALL LIGHT FIXTURES AND PREPARE FOR NEW LIGHTS PER ELECTRICAL SHEETS.



**2 FIRST FLOOR DEMO PLAN**

SCALE: 1/8"=1'-0"

**RENOVATION OF DORM AND CHAPEL**  
 ARKANSAS SCHOOL FOR MATHEMATICS, SCIENCES, AND THE ARTS  
 200 WHITTINGTON AVE., HOT SPRINGS, AR  
**Allison + Partners, Inc.**  
 200 W. Capitol, Suite 1400  
 Little Rock, AR 72201  
 P: 501.376.0717

SCHEMATIC DESIGN  
 NOT FOR CONSTRUCTION

REVISION:

SHEET TITLE:  
**BASEMENT  
 AND FIRST  
 FLOOR DEMO**

DATE: OCT. 8, 2020

SCALE:

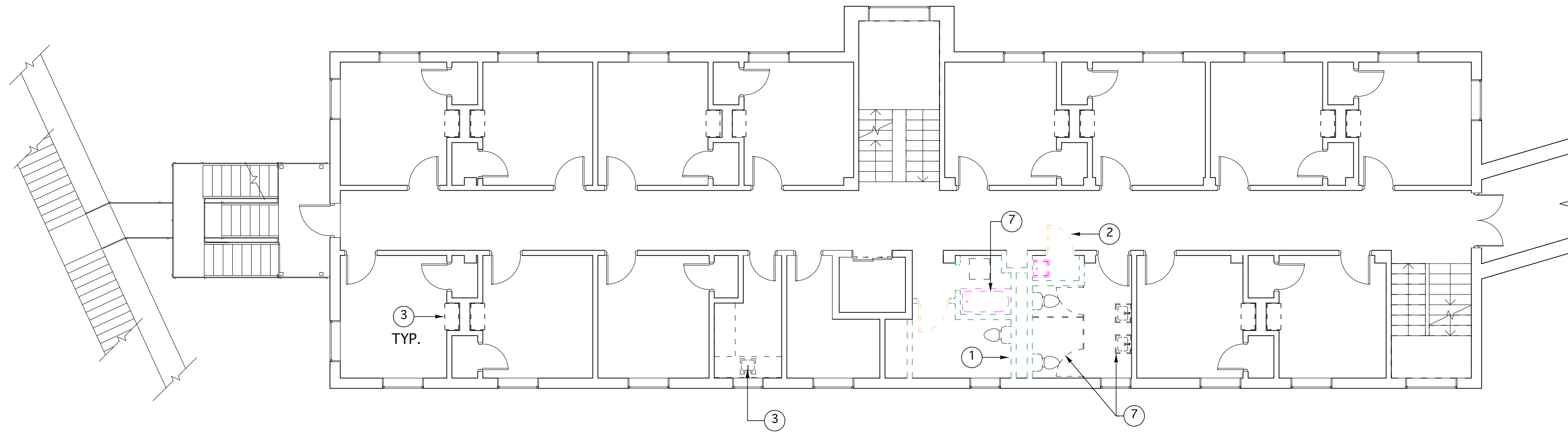
PROJECT NO: 414

SHEET NO.:

**A1.1**

GENERAL NOTES:

1. DIMENSIONS ARE TO FACE OF GYP. BOARD AND EXISTING COLUMN GRID UNLESS OTHERWISE NOTED.
2. CONTRACTOR TO VERIFY EXISTING COLUMN GRIDS (AS-BUILTS) ARE SHOWN IN THE EXACT LOCATION THAT APPEAR IN THIS DRAWING PRIOR TO PARTITION LAYOUT AND INSTALLATION.



**1 SECOND FLOOR DEMO PLAN**

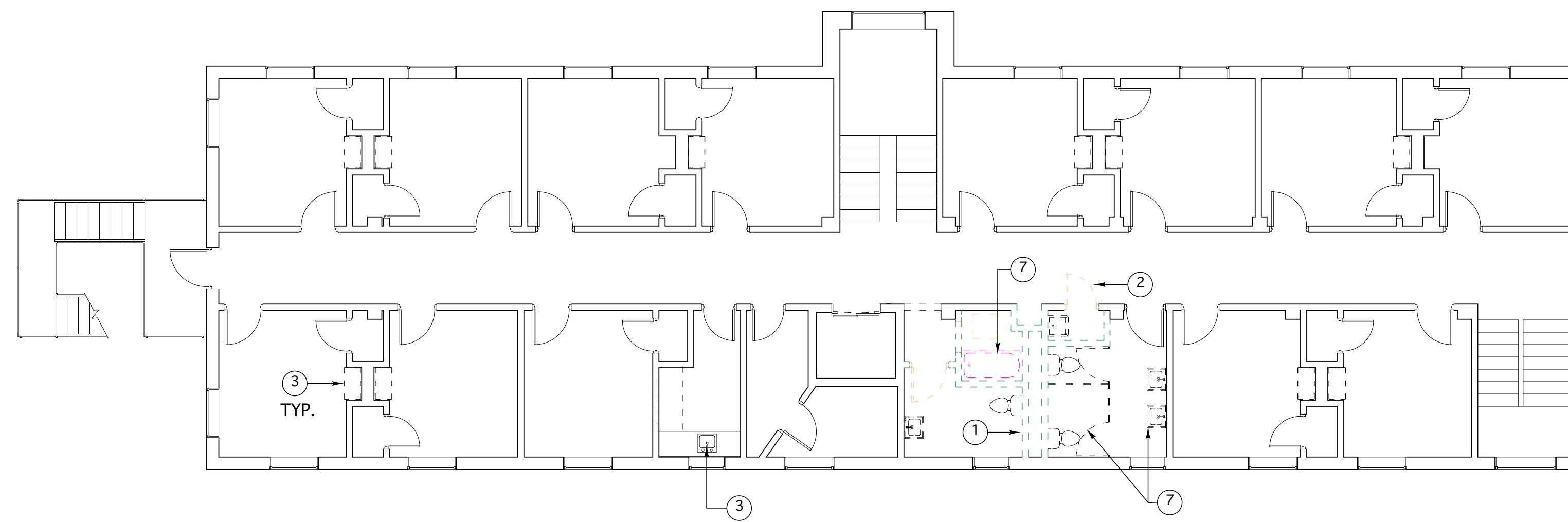
SCALE: 1/8"=1'-0"

**DEMOLITION NOTES:**

- 1 REMOVE EXISTING WALL AND ASSOCIATED COMPONENTS.
- 2 REMOVE EXISTING DOOR AND FRAME.
- 3 REMOVE EXISTING MILLWORK AND ASSOCIATED COMPONENTS.
- 4 REMOVE EXISTING WALL PANELING AND FURRING.
- 5 REMOVE EXISTING SCREEN WALL.
- 6 REMOVE EXISTING LAY-IN CEILING TILES AND GRID.
- 7 REMOVE EXISTING PLUMBING FIXTURES
- 8 REMOVE EXISTING TILE FLOORING AND TILE WALL FINISHES.

**GENERAL NOTES:**

1. REMOVE ALL WINDOW TREATMENTS.
2. SEE MECHANICAL AND PLUMBING SHEETS FOR REMOVAL OF UNITS AND FIXTURES.
3. REMOVE ALL LIGHT FIXTURES AND PREPARE FOR NEW LIGHTS PER ELECTRICAL SHEETS.



**2 THIRD FLOOR DEMO**

SCALE: 1/8"=1'-0"

**RENOVATION OF DORM AND CHAPEL**  
 ARKANSAS SCHOOL FOR MATHEMATICS, SCIENCES, AND THE ARTS  
 200 WHITTINGTON AVE., HOT SPRINGS, AR  
**Allison + Partners, Inc.**  
 200 W. Capitol, Suite 1400  
 Little Rock, AR 72201  
 P: 501.376.0717

SCHEMATIC DESIGN  
 NOT FOR CONSTRUCTION

REVISION:

---



---



---

SHEET TITLE:  
**SECOND FLOOR  
 AND THIRD  
 FLOOR DEMO**

DATE: OCT. 8, 2020

SCALE:

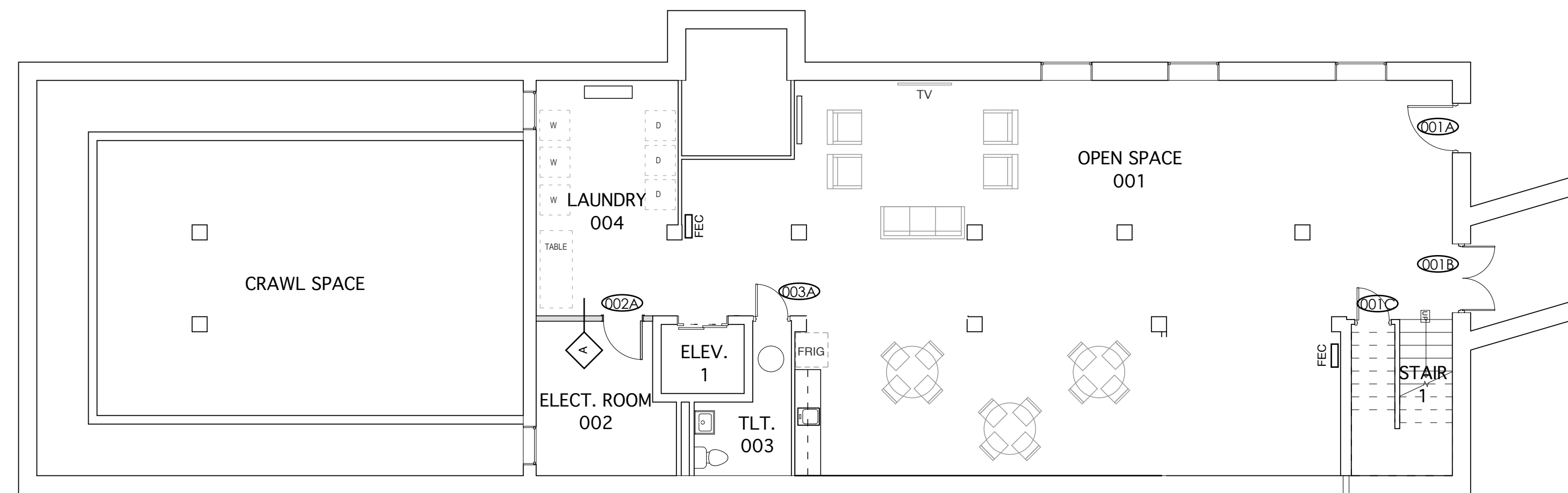
PROJECT NO: 414

SHEET NO.:

**A1.2**

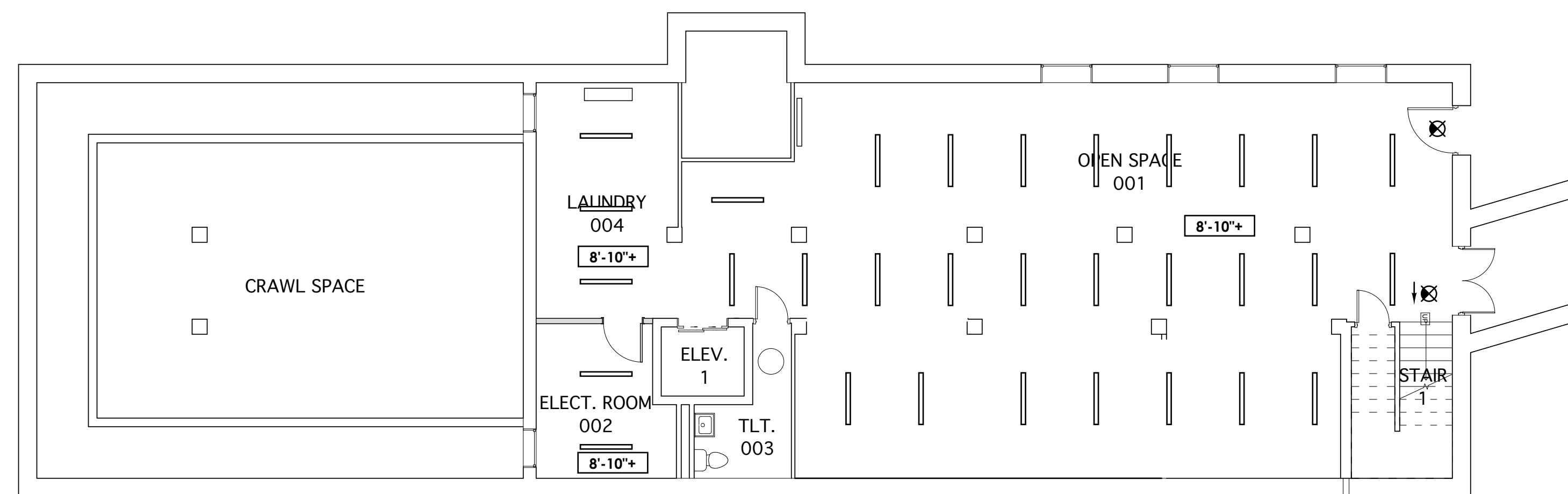
GENERAL NOTES:

1. DIMENSIONS ARE TO FACE OF GYP. BOARD AND EXISTING COLUMN GRID UNLESS OTHERWISE NOTED.
2. CONTRACTOR TO VERIFY EXISTING CONDITIONS PRIOR TO LAYOUT AND INSTALLATION.
3. PAINT ALL EXPOSED PIPING, DUCTWORK, AND UTILITIES. THIS INCLUDES, BUT NOT LIMITED TO, THOSE THAT RUN ALONG CEILINGS AND WALLS.
4. PAINT EXPOSED STRUCTURE AND EXPOSED CONCRETE FLOOR OVERHEAD.



**1 BASEMENT FLOOR PLAN**

SCALE: 1/8"=1'-0"



**2 BASEMENT REFLECTIVE CEILING PLAN**

SCALE: 1/8"=1'-0"

**RCP SYMBOLS LEGEND**

- EXPOSED STRUCTURE (NO CEILING)
- GYPSUM BOARD CEILING AND FURR DOWNS - PAINTED
- 2' X 2' ACOUSTICAL CEILING TILE AND GRID SYSTEM
- RECESSED CANS
- PENDANT FIXTURE
- WALL MOUNT FIXTURE
- VANITY FIXTURE
- 2X2 FIXTURE
- EXIT SIGNS
- CEILING HEIGHT A.F.F.
- SUPPLY GRILLE
- RETURN GRILLE

RENOVATION OF DORM AND CHAPEL  
 ARKANSAS SCHOOL FOR MATHEMATICS, SCIENCES, AND THE ARTS  
 200 WHITTINGTON AVE., HOT SPRINGS, AR

Allison + Partners, Inc.  
 200 W. Capitol, Suite 1400  
 Little Rock, AR 72201  
 P: 501.376.0717

SCHEMATIC DESIGN  
 NOT FOR CONSTRUCTION

REVISION:  
 \_\_\_\_\_  
 \_\_\_\_\_  
 \_\_\_\_\_

SHEET TITLE:  
**BASEMENT FLOOR PLAN AND RCP**

DATE: OCT. 8, 2020

SCALE:

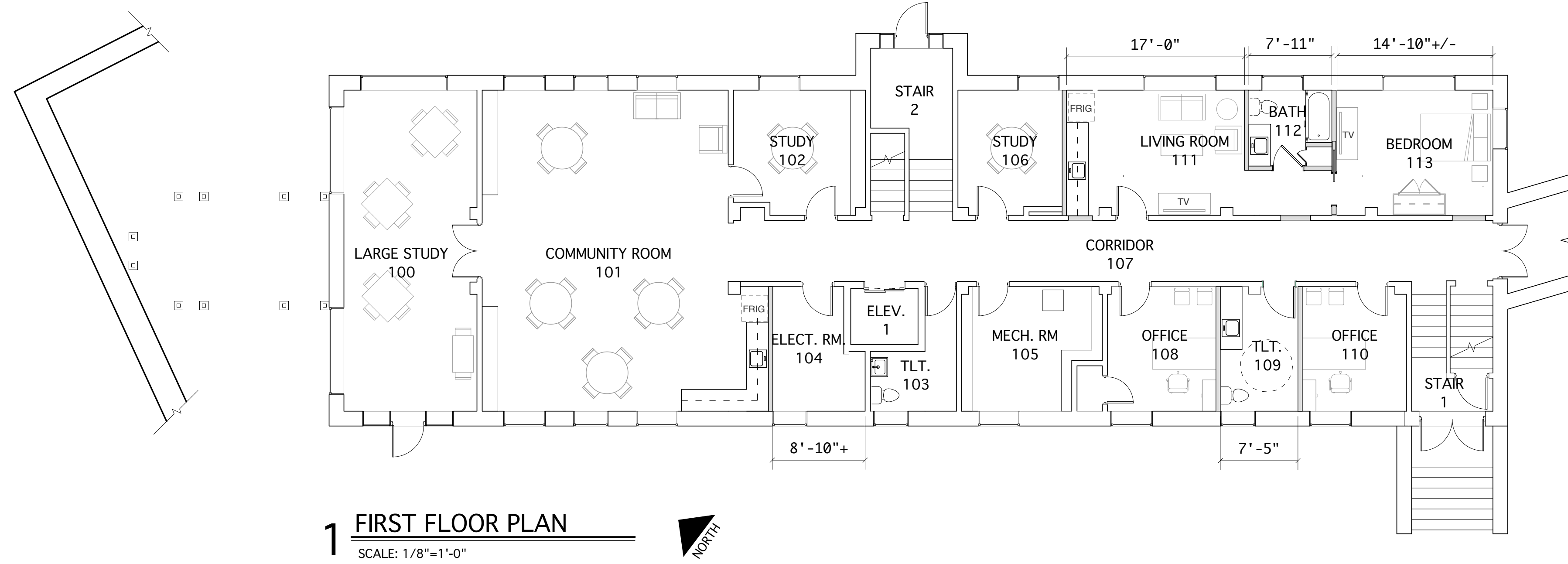
PROJECT NO: 414

SHEET NO.:

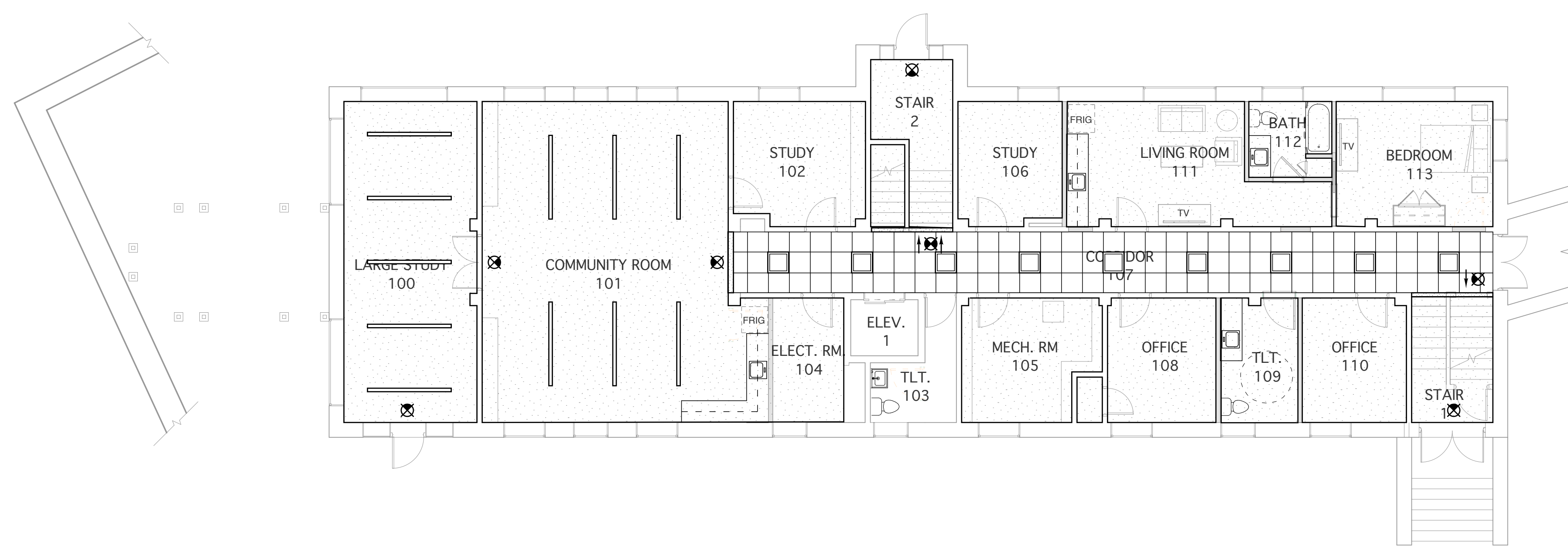
**A1.3**

GENERAL NOTES:

1. DIMENSIONS ARE TO FACE OF GYP. BOARD AND EXISTING COLUMN GRID UNLESS OTHERWISE NOTED.
2. CONTRACTOR TO VERIFY EXISTING COLUMN GRIDS (AS-BUILTS) ARE SHOWN IN THE EXACT LOCATION THAT APPEAR IN THIS DRAWING PRIOR TO PARTITION LAYOUT AND INSTALLATION.



**1 FIRST FLOOR PLAN**  
SCALE: 1/8"=1'-0"



**2 FIRST FLOOR REFLECTIVE CEILING PLAN**  
SCALE: 1/8"=1'-0"

**RCP SYMBOLS LEGEND**

	EXPOSED STRUCTURE (NO CEILING)
	GYP. BOARD CEILING AND FURR DOWNS - PAINTED
	2' X 2' ACOUSTICAL CEILING TILE AND GRID SYSTEM
	RECESSED CANS
	PENDANT FIXTURE
	WALL MOUNT FIXTURE
	VANITY FIXTURE
	2X2 FIXTURE
	EXIT SIGNS
	10'-0" CEILING HEIGHT A.F.F.
	SUPPLY GRILLE
	RETURN GRILLE

**RENOVATION OF DORM AND CHAPEL**  
 ARKANSAS SCHOOL FOR MATHEMATICS, SCIENCES, AND THE ARTS  
 200 WHITTINGTON AVE., HOT SPRINGS, AR  
**Allison + Partners, Inc.**  
 200 W. Capitol, Suite 1400  
 Little Rock, AR 72201  
 P: 501.376.0717

**SCHEMATIC DESIGN**  
 NOT FOR CONSTRUCTION

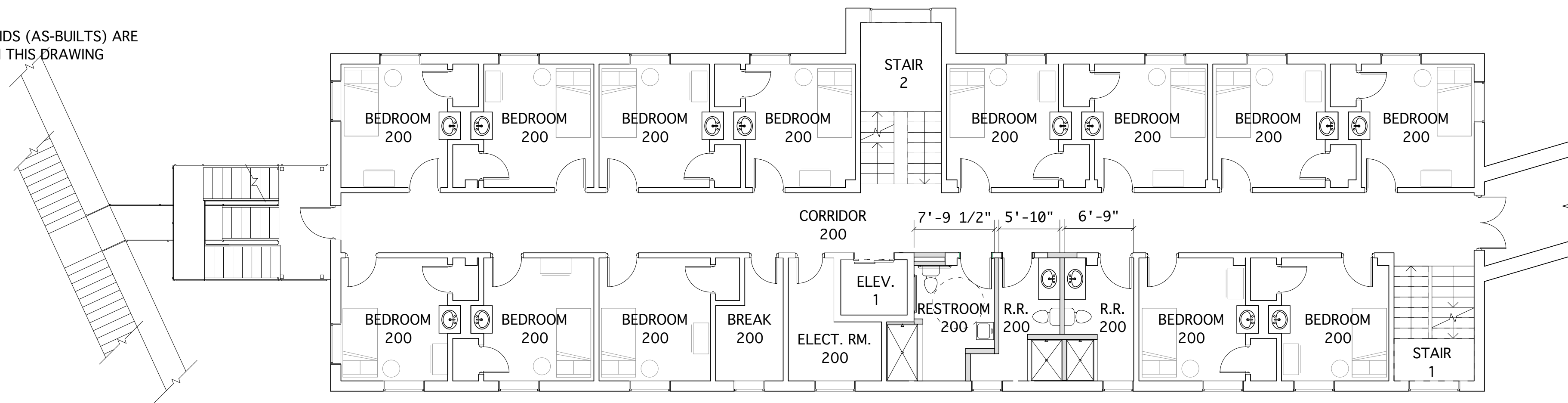
REVISION:	
SHEET TITLE:	<b>FIRST FLOOR PLAN AND RCP</b>
DATE:	Sept. 7, 2020
SCALE:	
PROJECT NO.:	416
SHEET NO.:	<b>A1.4</b>



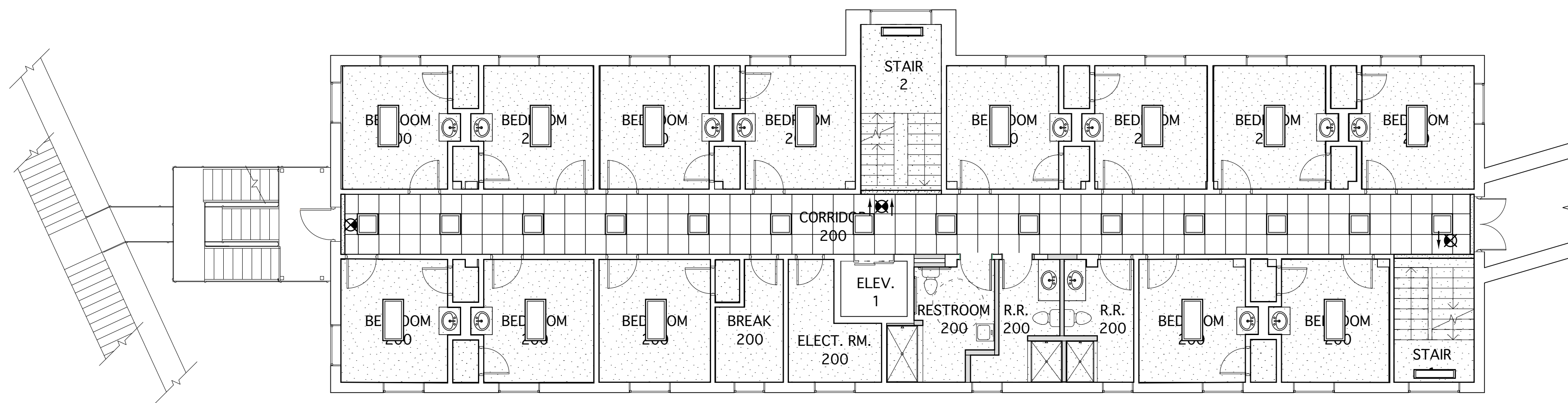
GENERAL NOTES:

1. DIMENSIONS ARE TO FACE OF GYP. BOARD AND EXISTING COLUMN GRID UNLESS OTHERWISE NOTED.

2. CONTRACTOR TO VERIFY EXISTING COLUMN GRIDS (AS-BUILTS) ARE SHOWN IN THE EXACT LOCATION THAT APPEAR IN THIS DRAWING PRIOR TO PARTITION LAYOUT AND INSTALLATION.



**1 SECOND FLOOR PLAN**  
SCALE: 1/8"=1'-0"



**2 SECOND FLOOR REFLECTIVE CEILING PLAN**  
SCALE: 1/8"=1'-0"

RCP SYMBOLS LEGEND	
	EXPOSED STRUCTURE (NO CEILING)
	GYPSUM BOARD CEILING AND FURR DOWNS - PAINTED
	2' X 2' ACOUSTICAL CEILING TILE AND GRID SYSTEM
	RECESSED CANS
	PENDANT FIXTURE
	WALL MOUNT FIXTURE
	2X2 FIXTURE
	2X2 FIXTURE
	EXIT SIGNS
	10'-0" CEILING HEIGHT A.F.F.
	SUPPLY GRILLE
	RETURN GRILLE

RENOVATION OF DORM AND CHAPEL  
ARKANSAS SCHOOL FOR MATHEMATICS, SCIENCES, AND THE ARTS  
200 WHITTINGTON AVE., HOT SPRINGS, AR

Allison + Partners, Inc.  
200 W. Capitol, Suite 1400  
Little Rock, AR 72201  
P: 501.376.0717

SCHEMATIC DESIGN  
NOT FOR CONSTRUCTION

REVISION:  
\_\_\_\_\_  
\_\_\_\_\_  
\_\_\_\_\_

SHEET TITLE:  
**SECOND FLOOR PLAN AND RCP**

DATE: OCT. 8, 2020

SCALE:

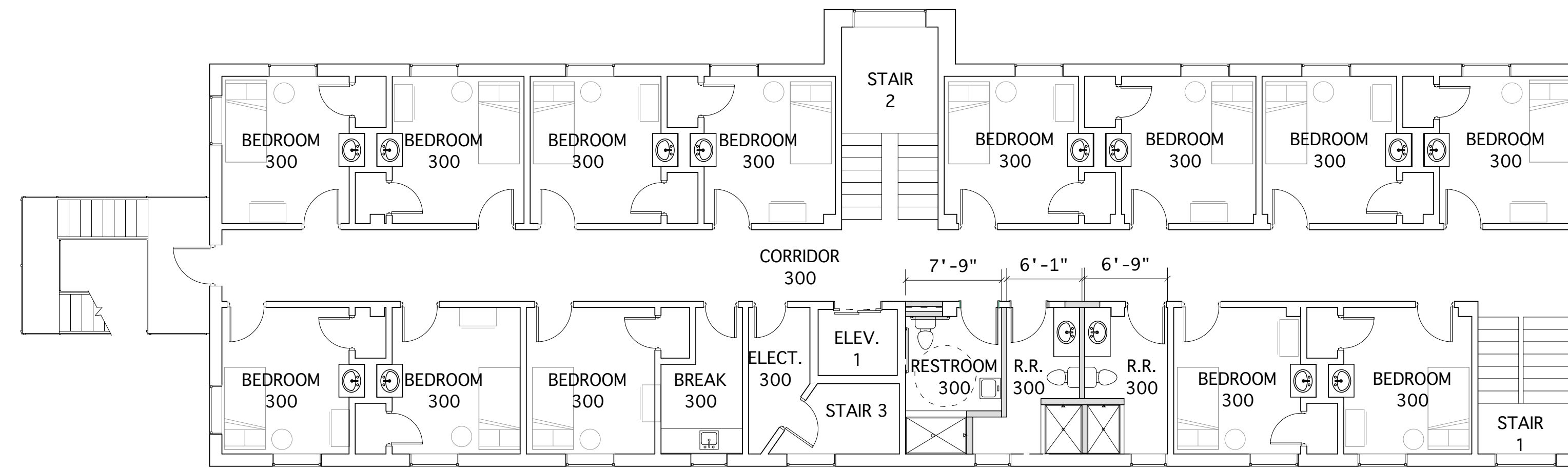
PROJECT NO: 414

SHEET NO.:

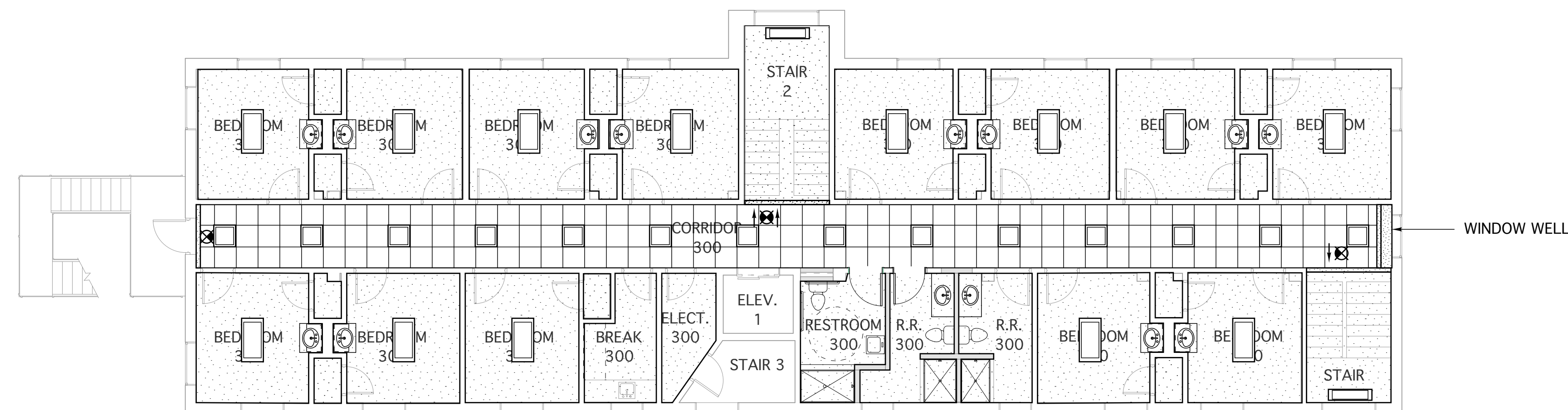
**A1.5**

GENERAL NOTES:

1. DIMENSIONS ARE TO FACE OF GYP. BOARD AND EXISTING COLUMN GRID UNLESS OTHERWISE NOTED.
2. CONTRACTOR TO VERIFY EXISTING COLUMN GRIDS (AS-BUILTS) ARE SHOWN IN THE EXACT LOCATION THAT APPEAR IN THIS DRAWING PRIOR TO PARTITION LAYOUT AND INSTALLATION.



**1 THIRD FLOOR PLAN**  
SCALE: 1/8"=1'-0"



**2 THIRD FLOOR REFLECTIVE CEILING PLAN**  
SCALE: 1/8"=1'-0"

RCP SYMBOLS LEGEND	
	EXPOSED STRUCTURE (NO CEILING)
	GYPSUM BOARD CEILING AND FURR DOWNS - PAINTED
	2' X 2' ACOUSTICAL CEILING TILE AND GRID SYSTEM
	RECESSED CANS
	PENDANT FIXTURE
	WALL MOUNT FIXTURE
	VANITY FIXTURE
	2X2 FIXTURE
	EXIT SIGNS
	10'-0" CEILING HEIGHT A.F.F.
	SUPPLY GRILLE
	RETURN GRILLE

RENOVATION OF DORM AND CHAPEL  
ARKANSAS SCHOOL FOR MATHEMATICS, SCIENCES, AND THE ARTS  
200 WHITTINGTON AVE., HOT SPRINGS, AR  
Allison + Partners, Inc.  
200 W. Capitol, Suite 1400  
Little Rock, AR 72201  
P: 501.376.0717

SCHEMATIC DESIGN  
NOT FOR CONSTRUCTION

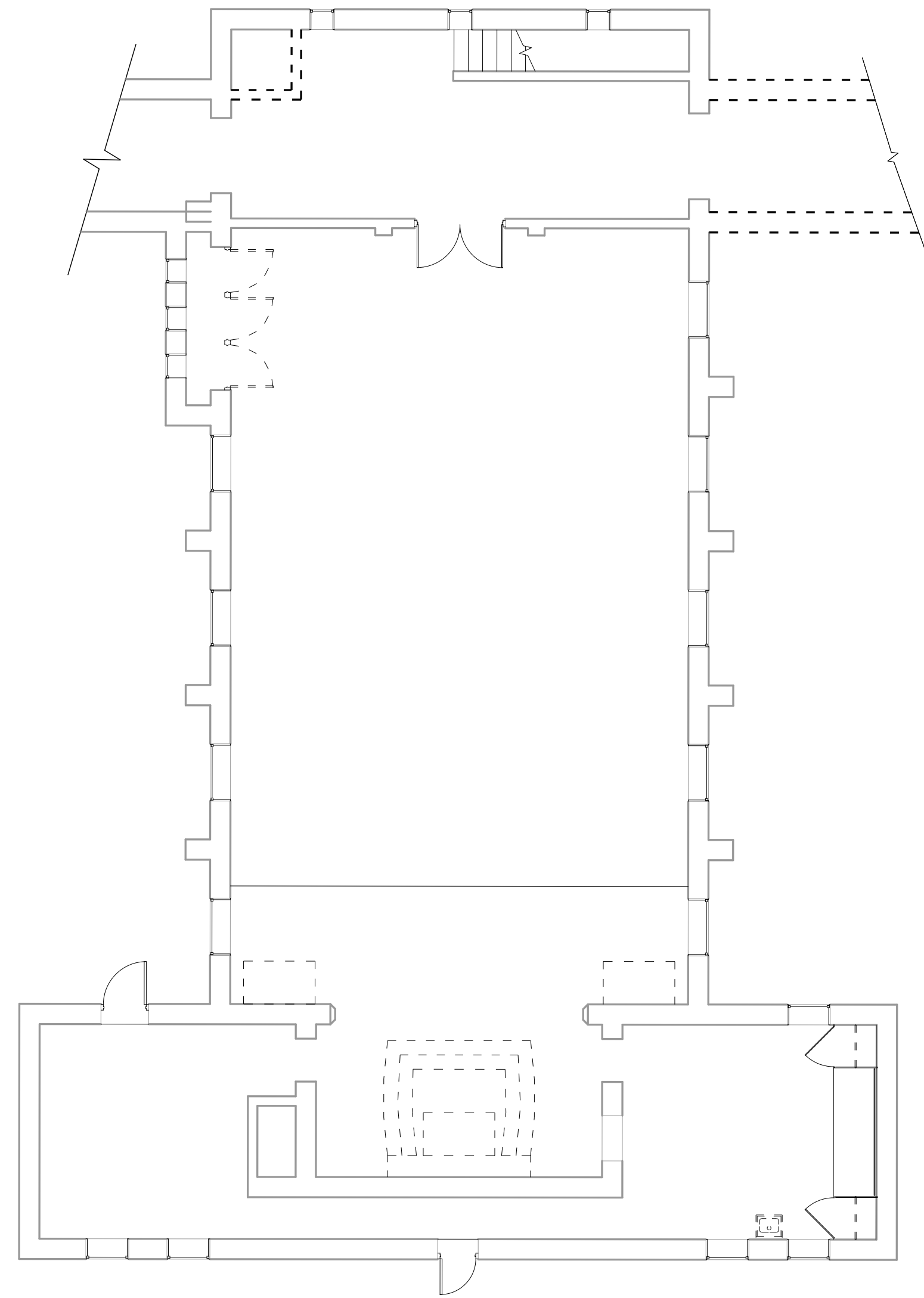
REVISION:	
SHEET TITLE:	THIRD FLOOR PLAN AND RCP
DATE:	OCT. 8, 2020
SCALE:	
PROJECT NO.:	414
SHEET NO.:	

**A1.6**

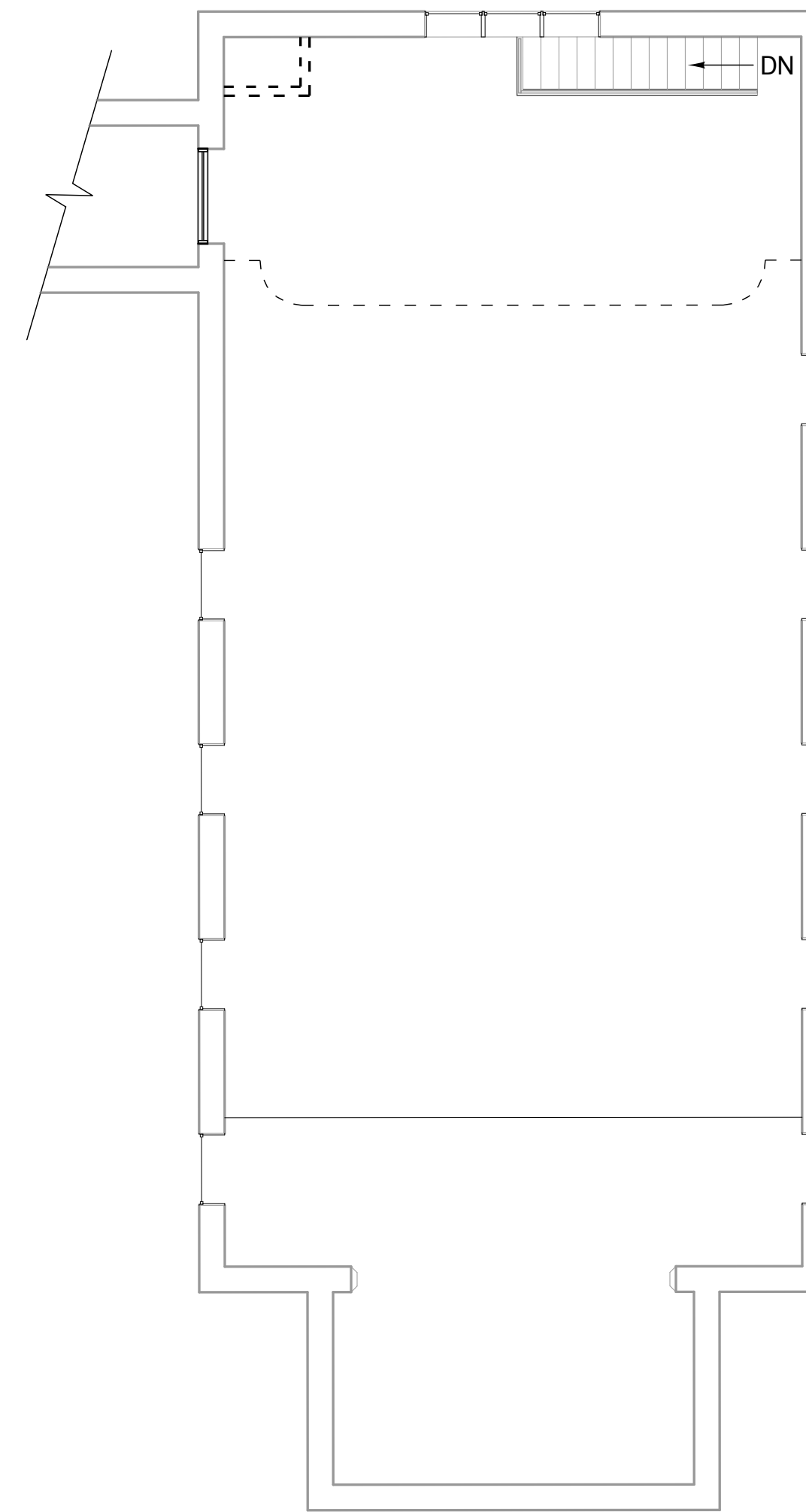
GENERAL NOTES:

1. DIMENSIONS ARE TO FACE OF GYP. BOARD AND EXISTING COLUMN GRID UNLESS OTHERWISE NOTED.

2. CONTRACTOR TO VERIFY EXISTING COLUMN GRIDS (AS-BUILTS) ARE SHOWN IN THE EXACT LOCATION THAT APPEAR IN THIS DRAWING PRIOR TO PARTITION LAYOUT AND INSTALLATION.



**1** FIRST FLOOR DEMO PLAN (CHAPEL)  
SCALE: 1/8"=1'-0"



**2** SECOND FLOOR DEMO PLAN (CHAPEL)  
SCALE: 1/8"=1'-0"

**RENOVATION OF DORM AND CHAPEL**  
ARKANSAS SCHOOL FOR MATHEMATICS, SCIENCES, AND THE ARTS  
200 WHITTINGTON AVE., HOT SPRINGS, AR  
**Allison + Partners, Inc.**  
200 W. Capitol, Suite 1400  
Little Rock, AR 72201  
P: 501.376.0717

SCHEMATIC DESIGN  
NOT FOR CONSTRUCTION

REVISION:  
\_\_\_\_\_  
\_\_\_\_\_  
\_\_\_\_\_

SHEET TITLE:  
**FIRST AND  
SECOND FLOOR  
DEMO (CHAPEL)**

DATE: OCT. 8, 2020

SCALE:

PROJECT NO: 414

SHEET NO.:

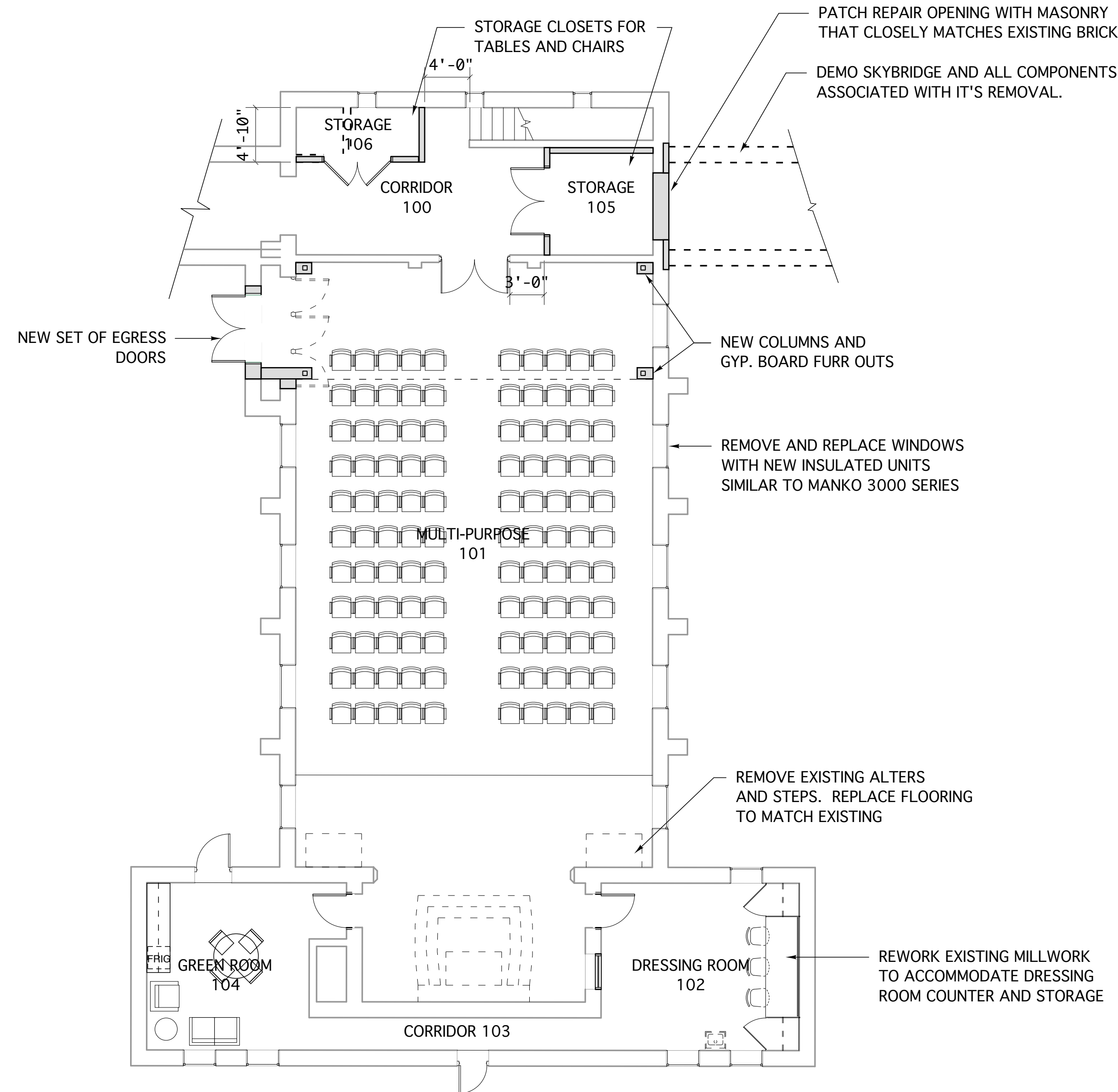
**A2.1**



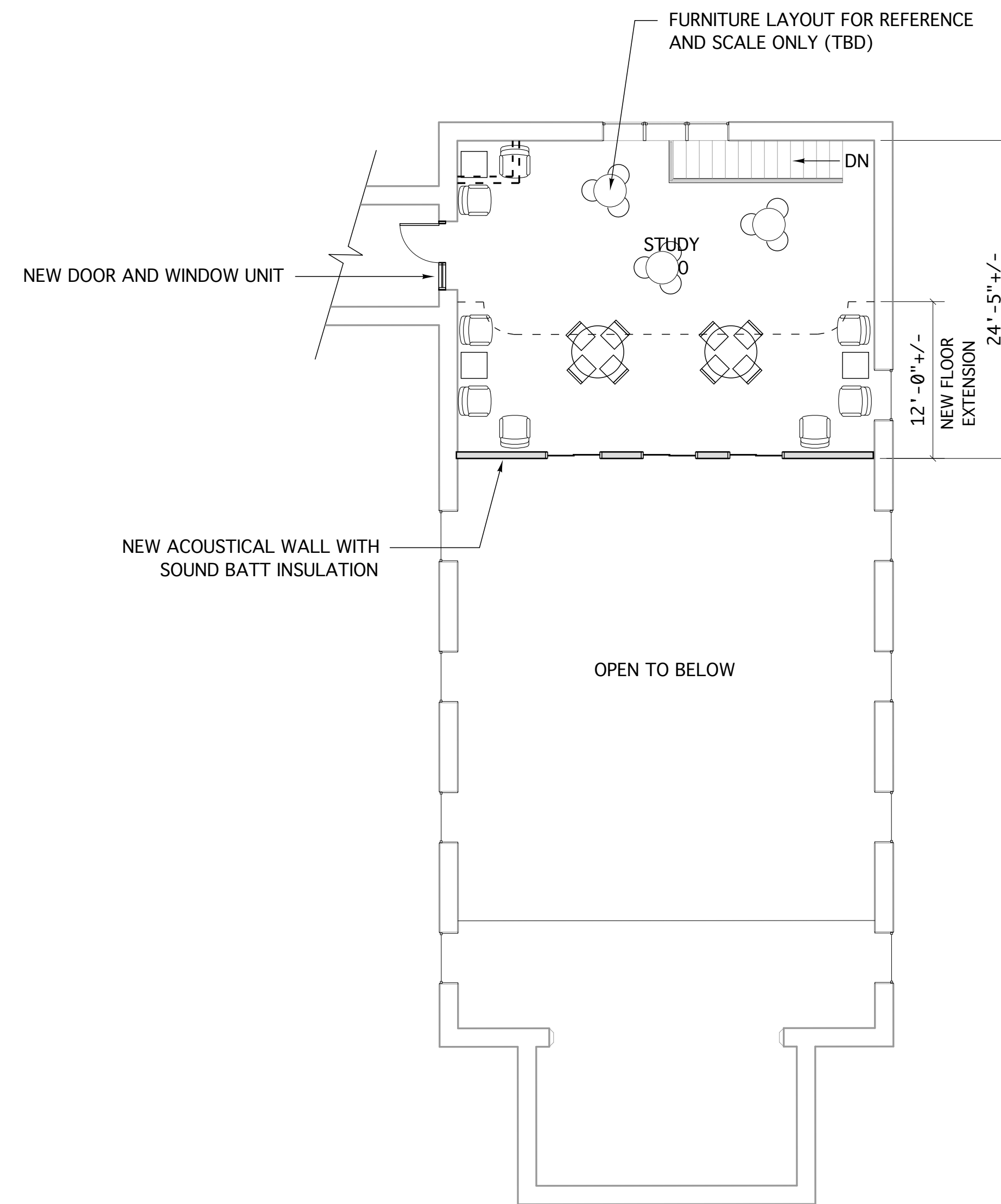
GENERAL NOTES:

1. DIMENSIONS ARE TO FACE OF GYP. BOARD AND EXISTING COLUMN GRID UNLESS OTHERWISE NOTED.

2. CONTRACTOR TO VERIFY EXISTING COLUMN GRIDS (AS-BUILTS) ARE SHOWN IN THE EXACT LOCATION THAT APPEAR IN THIS DRAWING PRIOR TO PARTITION LAYOUT AND INSTALLATION.



**1** FIRST FLOOR PLAN (CHAPEL)  
SCALE: 1/8"=1'-0"



**2** SECOND FLOOR PLAN (CHAPEL)  
SCALE: 1/8"=1'-0"

**RENOVATION OF DORM AND CHAPEL**  
ARKANSAS SCHOOL FOR MATHEMATICS, SCIENCES, AND THE ARTS  
200 WHITTINGTON AVE., HOT SPRINGS, AR

**Allison + Partners, Inc.**  
200 W. Capital, Suite 1400  
Little Rock, AR 72201  
P: 501.376.0717

SCHEMATIC DESIGN  
NOT FOR CONSTRUCTION

REVISION:

SHEET TITLE:

**FIRST AND SECOND FLOOR PLANS (CHAPEL)**

DATE: OCT. 8, 2020

SCALE:

PROJECT NO: 414

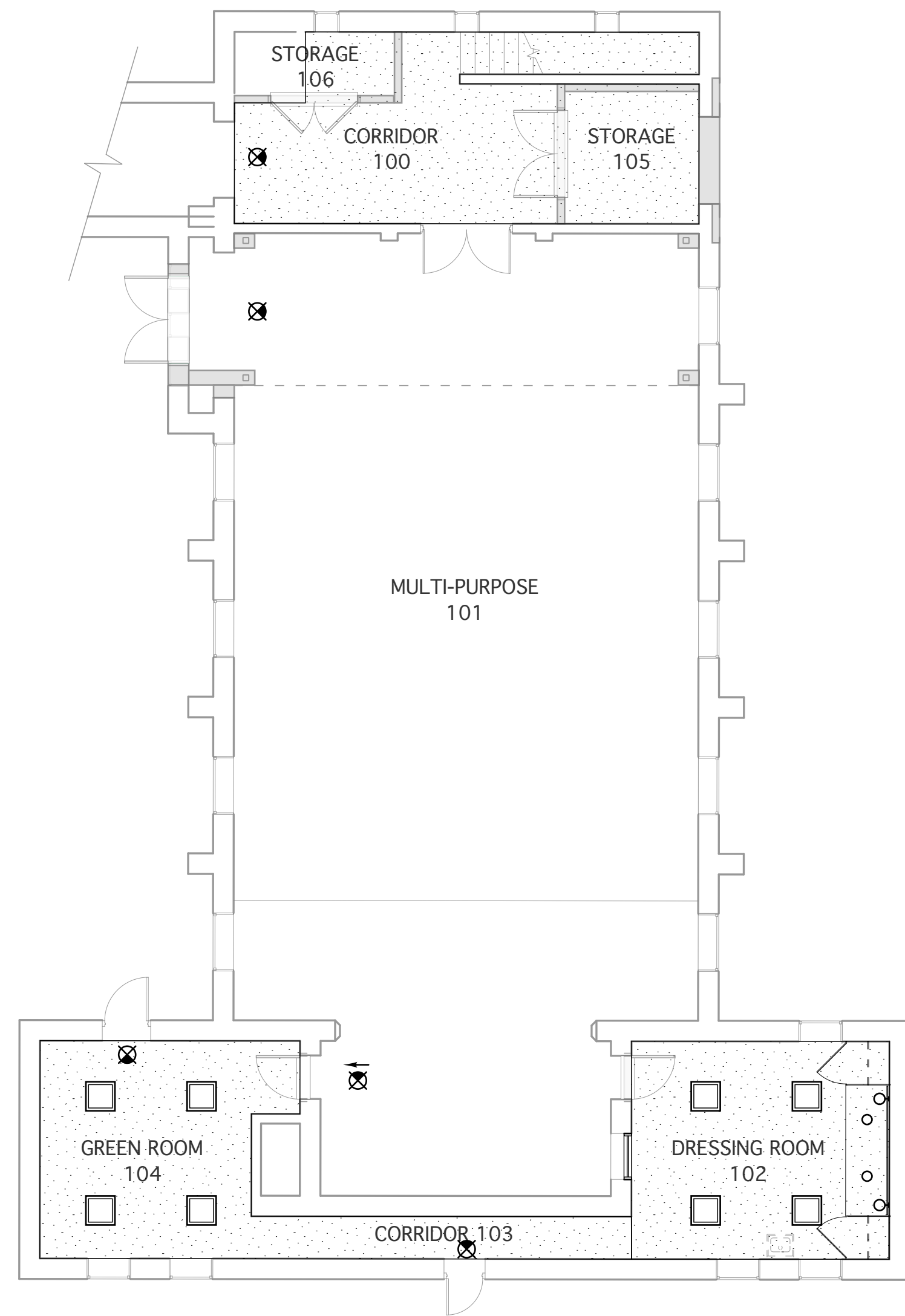
SHEET NO.:

**A2.2**

GENERAL NOTES:

1. DIMENSIONS ARE TO FACE OF GYP. BOARD AND EXISTING COLUMN GRID UNLESS OTHERWISE NOTED.


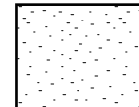
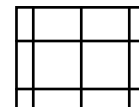











2. CONTRACTOR TO VERIFY EXISTING COLUMN GRIDS (AS-BUILTS) ARE SHOWN IN THE EXACT LOCATION THAT APPEAR IN THIS DRAWING PRIOR TO PARTITION LAYOUT AND INSTALLATION.

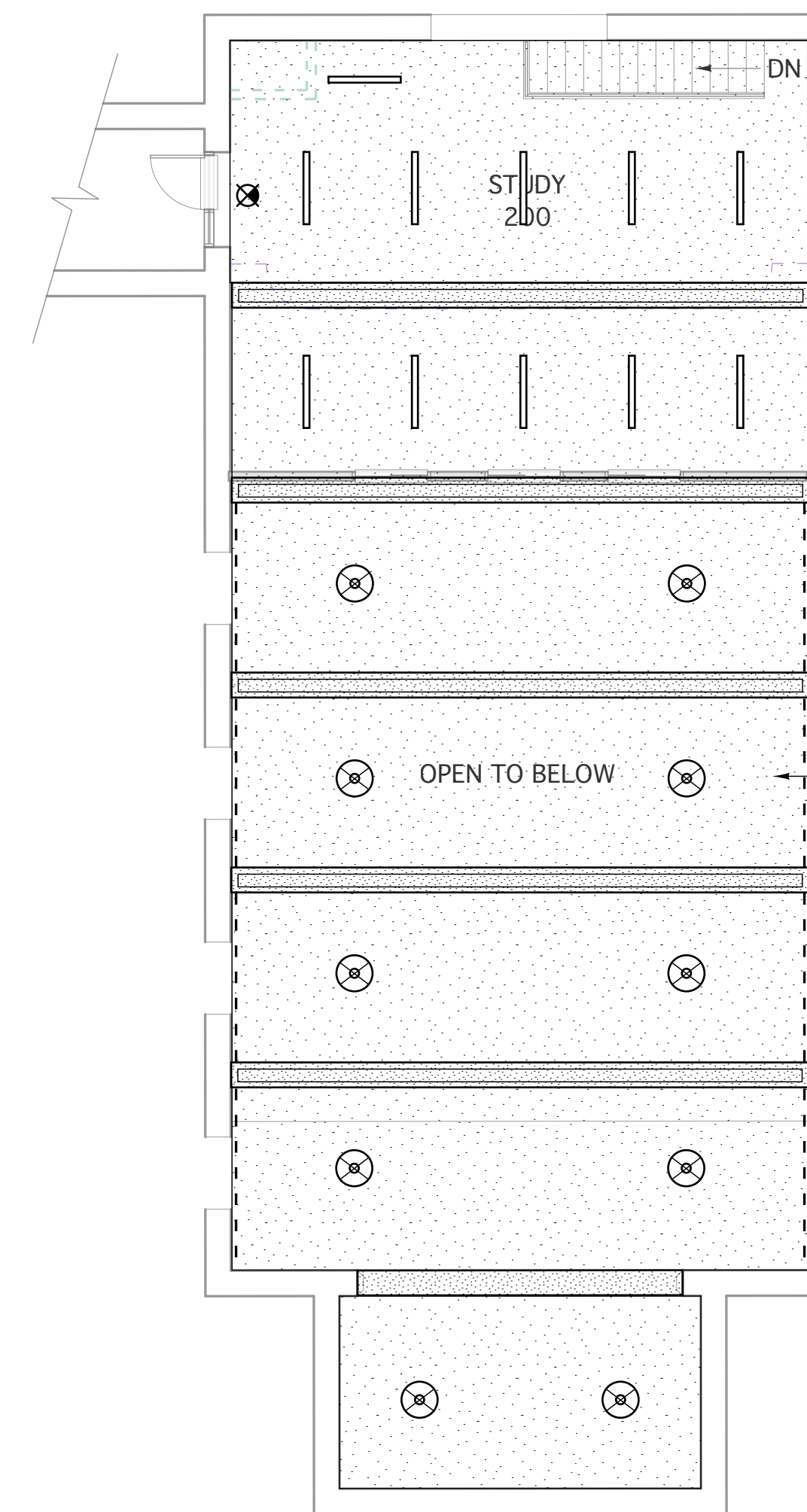


**1** FIRST FLOOR REFLECTED CEILING PLAN (CHAPEL)  
SCALE: 1/8"=1'-0"



**RCP SYMBOLS LEGEND**

-  EXPOSED STRUCTURE (NO CEILING)
-  PLASTER CEILINGS AND FURR DOWNS - PAINTED
-  2' X 2' ACOUSTICAL CEILING TILE AND GRID SYSTEM
-  RECESSED CANS
-  PENDANT FIXTURE
-  PENDANT FIXTURE
-  COVE STRIP LED
-  WALL MOUNT FIXTURE
-  VANITY FIXTURE
-  2X2 FIXTURE
-  EXIT SIGNS
-  CEILING HEIGHT A.F.F.
-  SUPPLY GRILLE
-  RETURN GRILLE



**2** SECOND FLOOR REFLECTED CEILING PLAN (CHAPEL)  
SCALE: 1/8"=1'-0"



**RENOVATION OF DORM AND CHAPEL**  
 ARKANSAS SCHOOL FOR MATHEMATICS, SCIENCES, AND THE ARTS  
 200 WHITTINGTON AVE., HOT SPRINGS, AR

**Allison + Partners, Inc.**  
 200 W. Capitol, Suite 1400  
 Little Rock, AR 72201  
 P: 501.376.0717

SCHEMATIC DESIGN  
 NOT FOR CONSTRUCTION

REVISION:

SHEET TITLE:  
**FIRST AND SECOND FLOOR RCP (CHAPEL)**

DATE: OCT. 8, 2020

SCALE:

PROJECT NO: 414

SHEET NO.:

**A2.3**