

Boys

Girls

FLOWER BED FILLED WITH IVY

1 FIRST FLOOR PLAN COMPLETE

6,920 SQ FT.

1st Floor

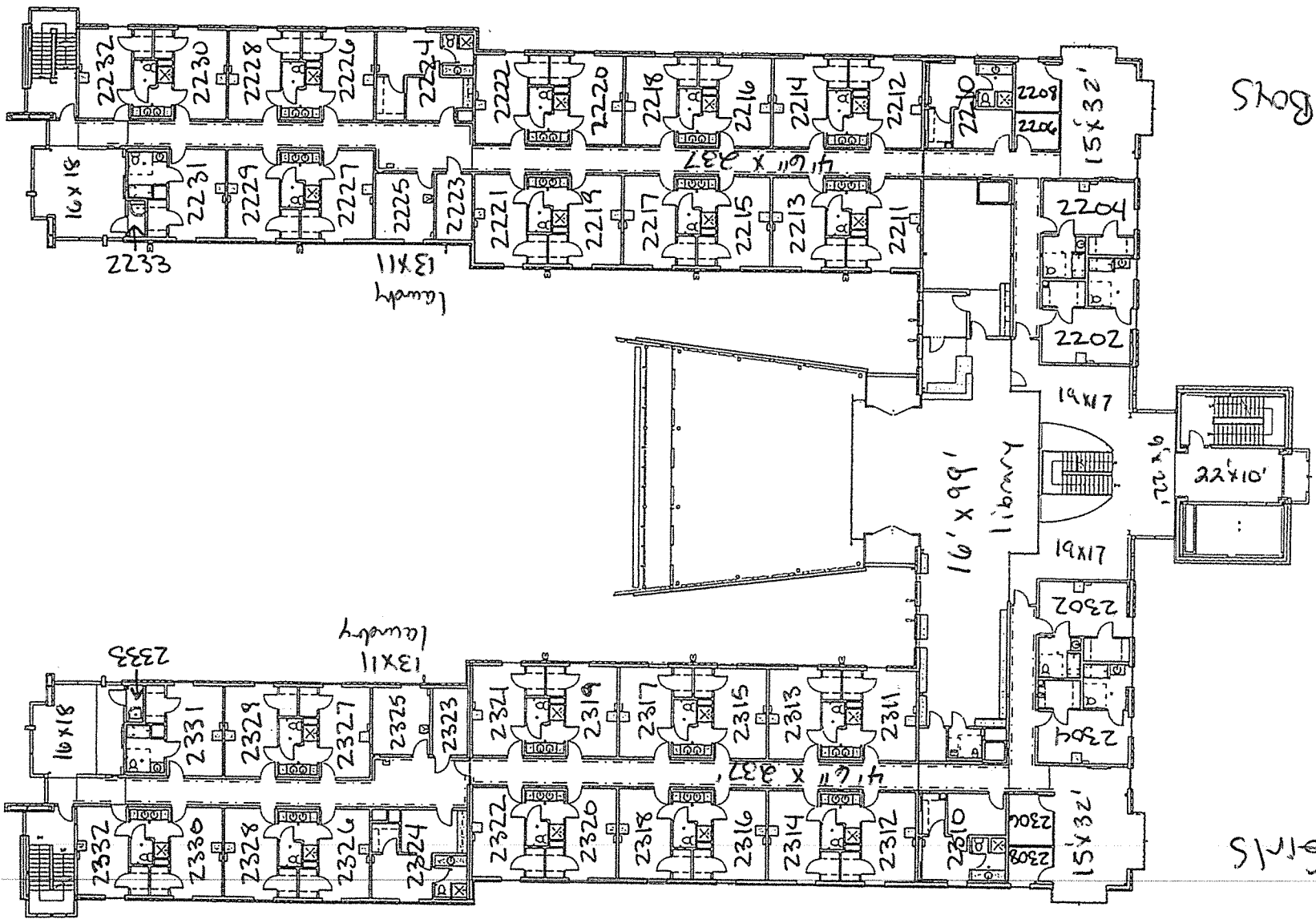
POLK STANLEY WILCOX ARCHITECTS
 3222 Cambridge Way, Suite 100
 Long Beach, CA 90801
 Phone: 562.595.1234
 Fax: 562.595.1235
 Website: polkstanleywilcox.com

Contractor:
 12345 Main Street, Suite 100
 Long Beach, CA 90801
 Phone: 562.595.1234
 Fax: 562.595.1235
 Website: contractor.com

6423 Sq Ft.

BOYS

GIRLS



6432 Sq Ft.

1 SECOND FLOOR PLAN COMPLETE

POLK
STANLEY
WILCOX
 ARCHITECTS

6022 Greenleaf Lane, Suite 100
 Little Rock, AR 72209
 501.225.2922
 501.225.2929 fax

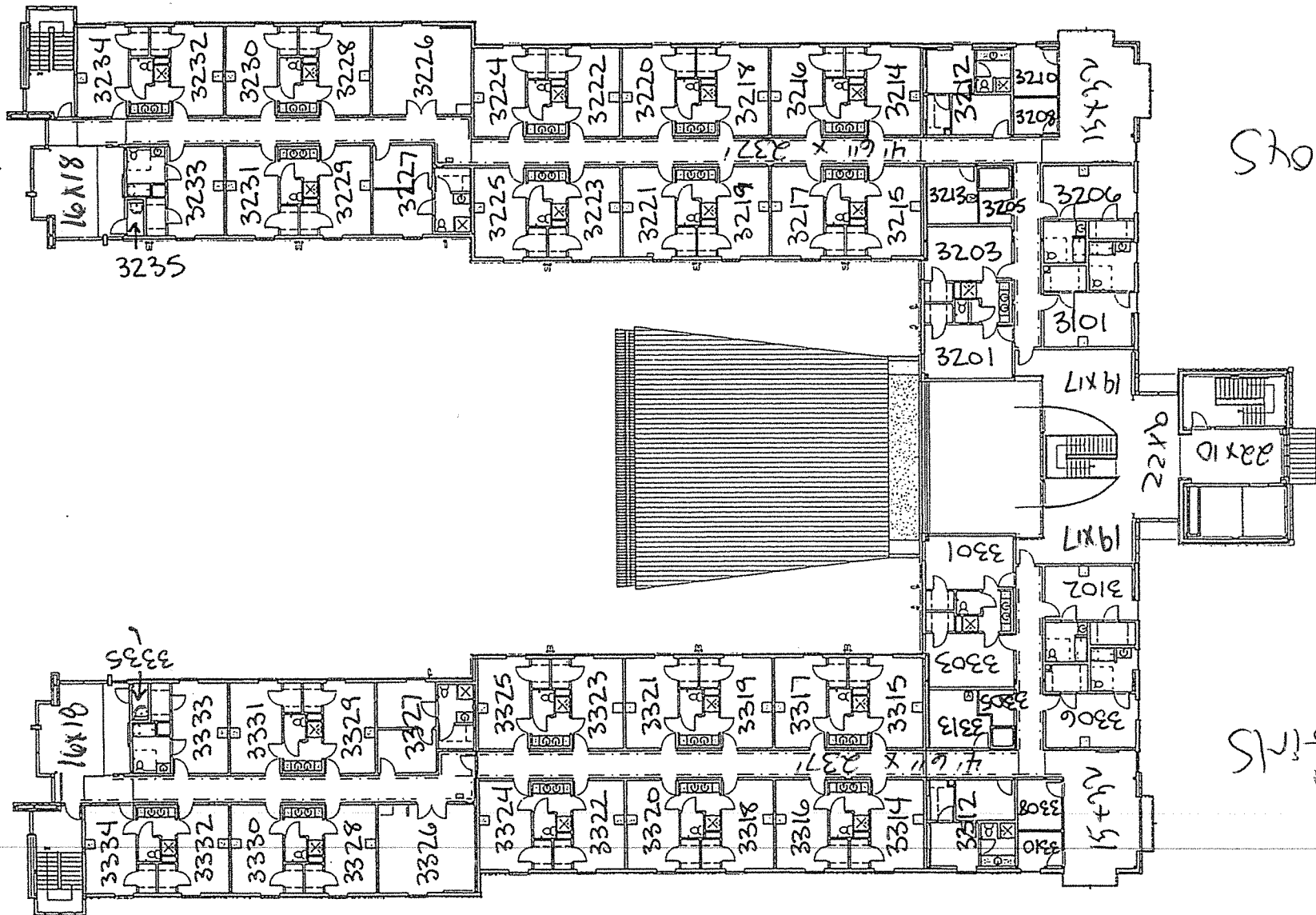
100 N. Spring St., Suite 104
 Fayetteville, AR 72701
 479.481.2722
 479.251.9726 fax

polkstanleywilcox.com

Scale:
 Registered Consulting Engineers
 P.E. M. Johnson
 Little Rock, AR 72201
 P.E. J. Johnson
 Fayetteville, AR 72701
 P.E. Woodward
 Little Rock, AR 72201
 P.E. Johnson
 Little Rock, AR 72201

Licensee Information:
 License No. 10000
 License No. 10000
 License No. 10000
 License No. 10000
 License No. 10000
 License No. 10000
 License No. 10000
 License No. 10000

2nd floor



Boys

Girls

4839 Sq. Ft.

1 THIRD FLOOR PLAN COMPLETE

POLK STANLEY WILCOX ARCHITECTS
 2022 Calverton Lane | Suite 100
 Little Rock, AR 72091
 501.221.7474
 501.221.7475
 501.221.7476
 501.221.7477
 501.221.7478
 501.221.7479
 501.221.7480
 501.221.7481
 501.221.7482
 501.221.7483
 501.221.7484
 501.221.7485
 501.221.7486
 501.221.7487
 501.221.7488
 501.221.7489
 501.221.7490
 501.221.7491
 501.221.7492
 501.221.7493
 501.221.7494
 501.221.7495
 501.221.7496
 501.221.7497
 501.221.7498
 501.221.7499
 501.221.7500
 polkstanleywilcox.com

3rd Floor

Civil
 Mechanical Engineering
 Electrical Engineering
 Structural Engineering
 Landscape Architecture
 Construction Management
 Surveying
 1200 Westwood Blvd.
 Little Rock, AR 72091
 501.221.7474
 501.221.7475
 501.221.7476
 501.221.7477
 501.221.7478
 501.221.7479
 501.221.7480
 501.221.7481
 501.221.7482
 501.221.7483
 501.221.7484
 501.221.7485
 501.221.7486
 501.221.7487
 501.221.7488
 501.221.7489
 501.221.7490
 501.221.7491
 501.221.7492
 501.221.7493
 501.221.7494
 501.221.7495
 501.221.7496
 501.221.7497
 501.221.7498
 501.221.7499
 501.221.7500